

Title: Modifications to the Alhambra Corridor Special Planning District (SPD) (LR16-009) [Noticed 09/16/2016; Passed for Publication 09/20/2016; Published 09/23/2016]

Recommendation: Conduct a public hearing and upon conclusion, pass a) an ordinance amending sections 17.420.010 and 17.420.020 of the Sacramento City Code Relating to the Alhambra Corridor Special Planning District; and b) an ordinance amending Title 17 of the Sacramento City Code to rezone various parcels of real property from 26th to 29th Streets, between the Southern Pacific Railroad Levee and Highway 50.

Location: The area located between 26th and 34th Streets from the Southern Pacific Railroad Mainline Levee to Highway 50; Districts 3 and 4

Contact: Remi Mendoza, Associate Planner, (916) 808-5003; Jim McDonald, Principal Planner, (916) 808-5723, Community Development Department

Presenter: Remi Mendoza, Associate Planner, (916) 808-5003, Community Development Department

Department: Community Development Department

Attachments:

- 1-Description/Analysis
- 2-Existing Alhambra Corridor SPD Map
- 3-Proposed Alhambra Corridor SPD Map
- 4-Zoning Map
- 5-Zoning Table
- 6-Building at Scaled Heights
- 7-Ordinance Amending the Alhambra Corridor SPD (Redline)
- 8-Ordinance Amending the Alhambra Corridor SPD (Clean)
- 9-Rezone Ordinance

Description/Analysis

Issue Detail: In August 2015, the Sacramento City Council adopted a Downtown Housing Initiative Plan with the goal to deliver 10,000 new places to live in the Central City by 2025. In support of this endeavor, staff is proposing modifications to the Alhambra Corridor Special Planning District (SPD) in order to remove regulatory barriers that could inhibit housing development in the project area.

The Alhambra Corridor SPD currently includes properties located between 26th and 34th Streets from the Southern Pacific Railroad mainline levee to Highway 50 (Attachment 2). The proposed SPD modifications include:

1. Shrinking the footprint of the Alhambra Corridor SPD by adjusting the western boundary from 26th to 29th Streets, and
2. Removing the SPD height restrictions for properties located between 30th Street and Alhambra Boulevard from I to N Streets. The height standards and regulations of the applicable base zone shall apply for this area.

The above changes result in a smaller footprint for the Alhambra Corridor SPD (Attachment 3) that will help remove barriers to residential infill development by streamlining and increasing predictability for development projects. Additionally, these changes will allow development in the Central City to occur in a more consistent urban development pattern as identified in the 2035 General Plan, Downtown Housing Initiative, Central City Neighborhood Design Guidelines, and the Planning and Development Code.

Policy Considerations: The 2035 General Plan includes the following goals and policies, which are consistent with the proposed modifications:

GOAL Land Use (LU) 6.1 Corridors. Support the development of major circulation corridors that balance their vehicular function with a vibrant mix of uses that contribute to meeting local and citywide needs for retail, services, and housing and provide pedestrian-friendly environments that serve as gathering places for adjacent neighborhoods.

LU 6.1.5 Higher Intensity Nodes. The City shall generally direct higher-intensity land uses and taller buildings to major intersections along arterial roads to facilitate access, enhance transit service, and promote physical differentiation along the corridor.

LU 1.1.4 Leading Infill Growth. The City shall facilitate infill development through active leadership and the strategic provision of infrastructure and services and supporting land uses.

LU 1.1.5 Infill Development. The City shall promote and provide incentives (e.g., focused infill planning, zoning/rezoning, revised regulations, provision of infrastructure) for infill development, reuse, and growth in existing urbanized areas to enhance community character, optimize City investments in infrastructure and community facilities, support increased transit use, promote pedestrian- and bicycle-friendly neighborhoods, increase housing diversity, ensure integrity of historic districts, and enhance retail viability.

Economic Impacts: Not applicable.

Environmental Considerations: Approval of the required amendments constitutes an administrative action that will not result in direct or indirect physical changes in the environment, and the action is not a project that requires environmental review under the California Environmental Quality Act (CEQA). See CEQA Guidelines section 15378(b)(5). Any future proposed development is subject to the review requirements established in the Planning and Development Code, including CEQA review as appropriate.

Sustainability: The proposed modifications to the Alhambra Corridor Special Planning District are consistent with General Plan goals to increase the number of places to live within the Central City. Increasing housing density in the Central City around public transportation hubs will reduce dependence on the use of private automobile, reduce long commutes, reduce the use of fossil fuels, improve energy efficiency, reduce carbon dioxide emissions, and help meet air quality standards.

Commission/Committee Action: The ordinance has been considered by the Law and Legislation Committee and the Planning and Design Commission. They acted to forward a recommendation of approval to Council regarding the proposed modifications to the Alhambra Corridor Special Planning District.

Rationale for Recommendation: The current height restrictions were adopted in 1992 and do not reflect more recently adopted goals, policies, and guidelines that support more urban development in this area. The proposed modifications to the Alhambra Corridor SPD will remove regulatory barriers that currently artificially limit the size of new housing development.

Financial Considerations: Not applicable.

Local Business Enterprise (LBE): Not applicable.

Background:

The Alhambra Corridor SPD was adopted in 1992 and consists of properties located between 26th and 34th streets from Southern Pacific Railroad mainline levee to Highway 50. In the 1990's the Alhambra SPD served as the primary regulatory tool to ensure development was built consistent with the preservation of the neighborhood scale and character. Among other regulations, the SPD placed limitations on the height of new residential and commercial development with the unintended consequence of creating an unpredictable approval process that disincentivized new housing.

The older Alhambra Corridor SPD pre-dates the Sacramento Area Council of Governments (SACOG) Regional Blueprint, the 2035 General Plan, and the Downtown Housing Initiative Plan, all of which clearly now forecast and encourage more urban development in the Central City and along urban corridors. The 2035 General Plan anticipates the majority of the City's growth to occur within the Central City and the Mayor's Downtown Housing Initiative has set goal to deliver 10,000 units in in the Central City by 2025.

Within the Central City there is a demand for new housing and supporting commercial development. The proposed changes to the Alhambra SPD will remove regulatory barriers to allow for predictable and efficient development of housing and other supporting land uses in the area. The proposed changes include:

1. Shrinking the footprint of the Alhambra Corridor SPD by adjusting the western boundary from 26th Street to 29th Street (requiring a rezone) and
2. Removing the SPD height restrictions for properties located between 30th Street and Alhambra Boulevard from I Street to N Street. The height standards and regulations of the applicable base zone shall apply for this area.

To amend the Planning and Development Code, and bring about these Alhambra Corridor SPD modifications, the City Council must find that:

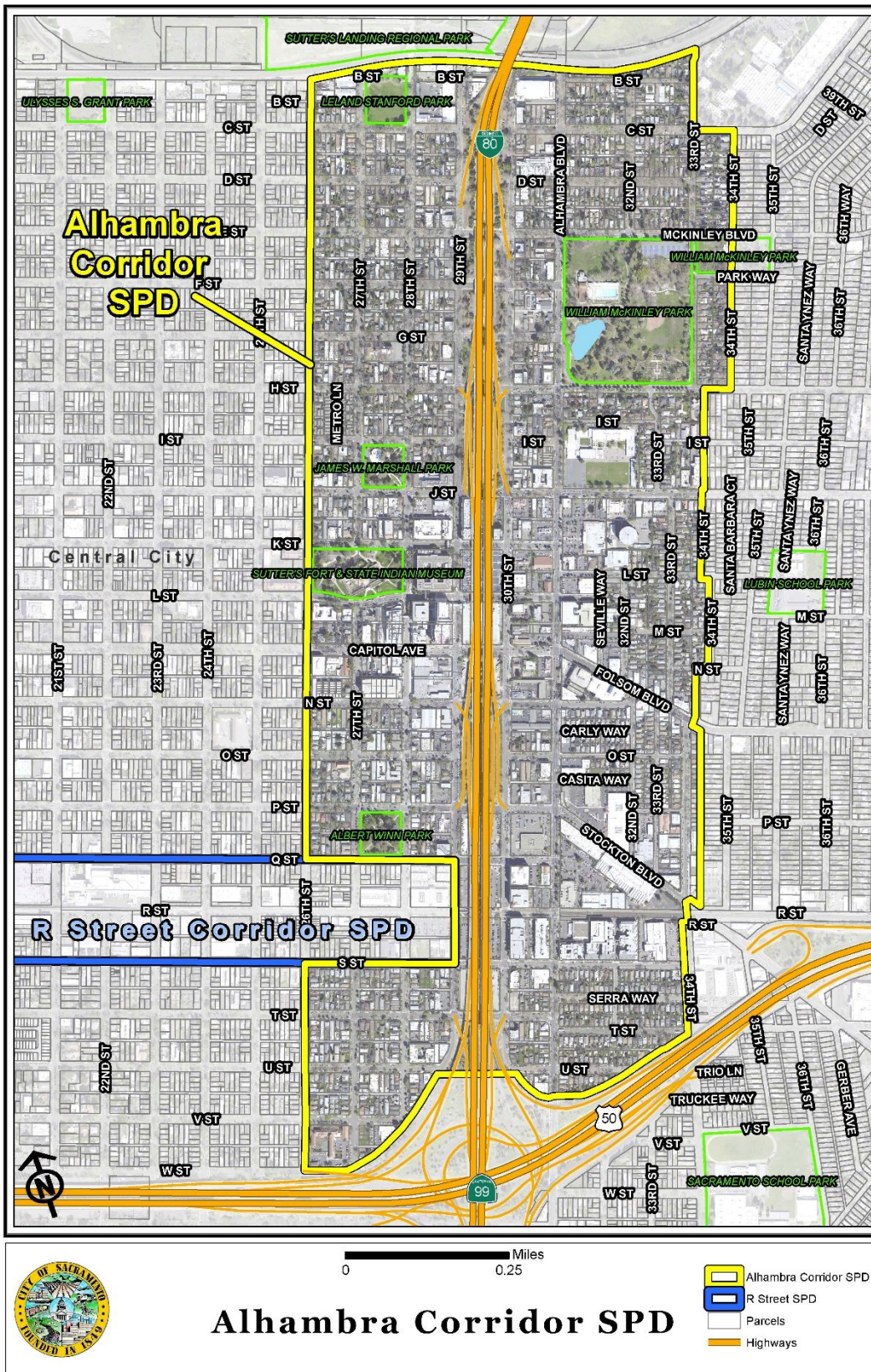
- A. Rezoning of the property is consistent with the applicable general plan land use designation, use, and development standards; the goals, policies, and other provisions of the general plan; and any applicable specific plan.
- B. The text amendments complement, support, and facilitate the implementation of the goals, policies, and other provisions of the general plan and the city's specific plans, and

- C. The proposed amendments promote the public health, safety, convenience, and welfare of the city.

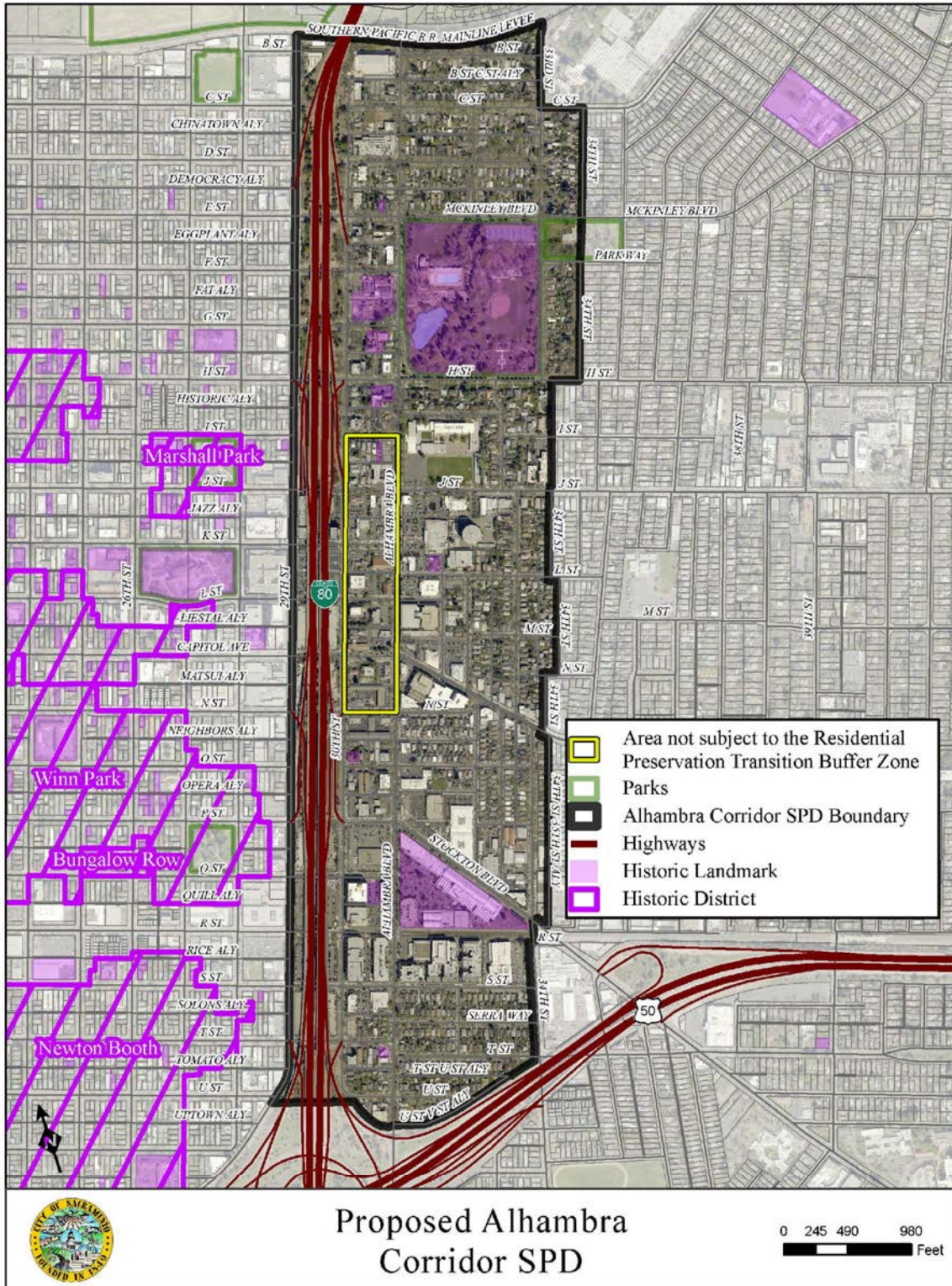
These findings can be made because: 1) the proposed rezone amendments are consistent with general plan policies, land use designations, use, and development standards for the following respective general plan designations: Urban Corridor Low, Urban Corridor High, Traditional Neighborhood Medium Density, and Employment Center Low Rise; 2) removal of the Alhambra Corridor SPD height restrictions will facilitate infill development of major circulation corridors and within the Central City; and 3) the proposed amendments promote the public health, safety, convenience, and welfare of the city, in that, facilitating infill housing development will enhance the community character, support transit use, and promote pedestrian friendly neighborhoods.

As a result of removing these regulatory obstacles it is anticipated that more new housing development will occur in the Central City in a more consistent urban development pattern (see Attachment 4-Zoning Map, Attachment 5-Zoning Table, and Attachment 6- Building at Scaled Heights). It is also likely that taller and more intense development will occur along the elevated freeway (Business 80/Capital City). All new development within and outside of the SPD will continue to be subject to Site Plan and Design Review, the applicable Central City or Alhambra Corridor Design Guidelines, and historic preservation regulations as required. The city code requires historic review for all buildings over 50-years old and the existing historic district and landmark designations in the area will remain intact.

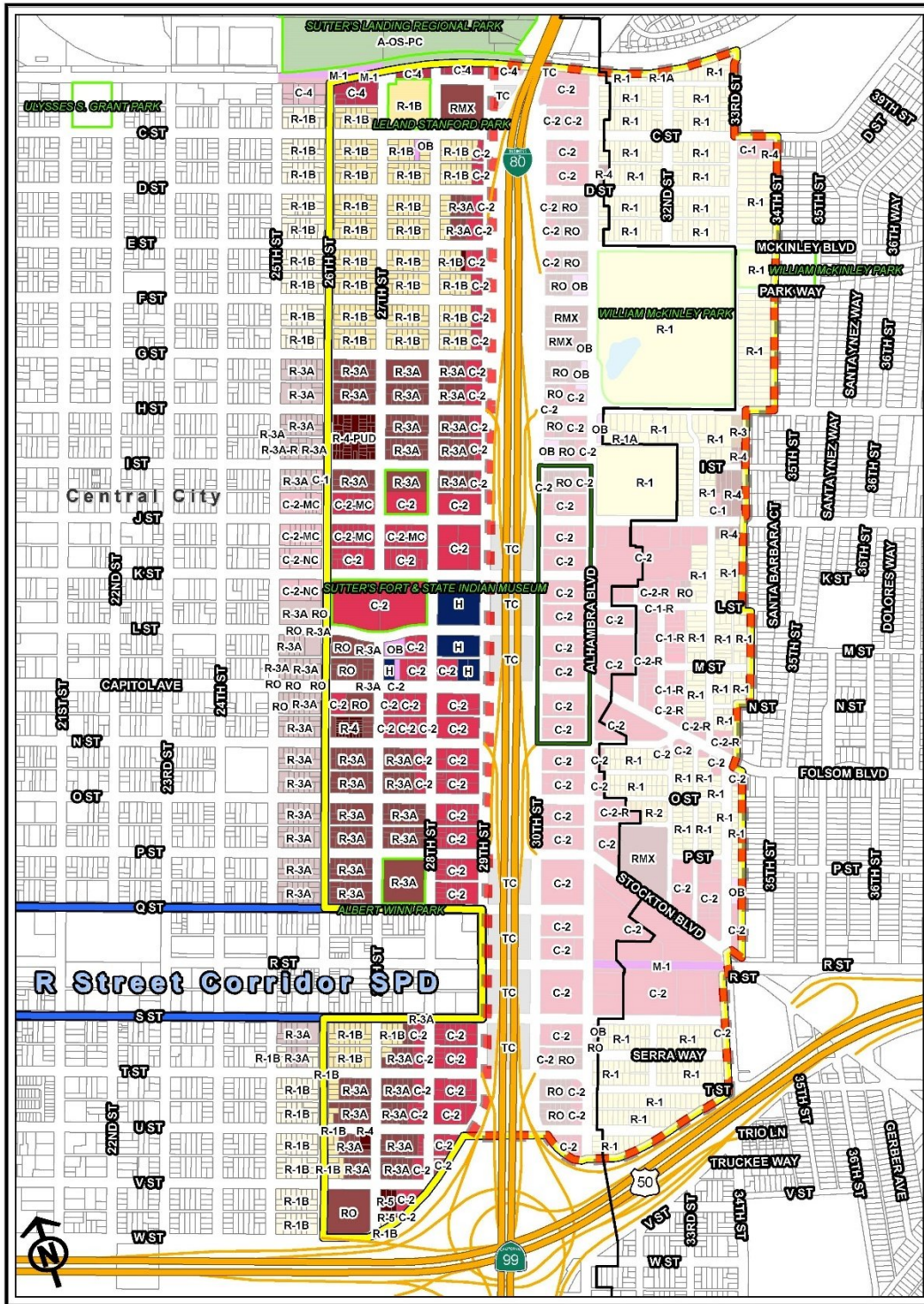
Existing Alhambra Corridor SPD Map



Proposed Alhambra Corridor SPD Map



Zoning Map



0 0.25 Miles

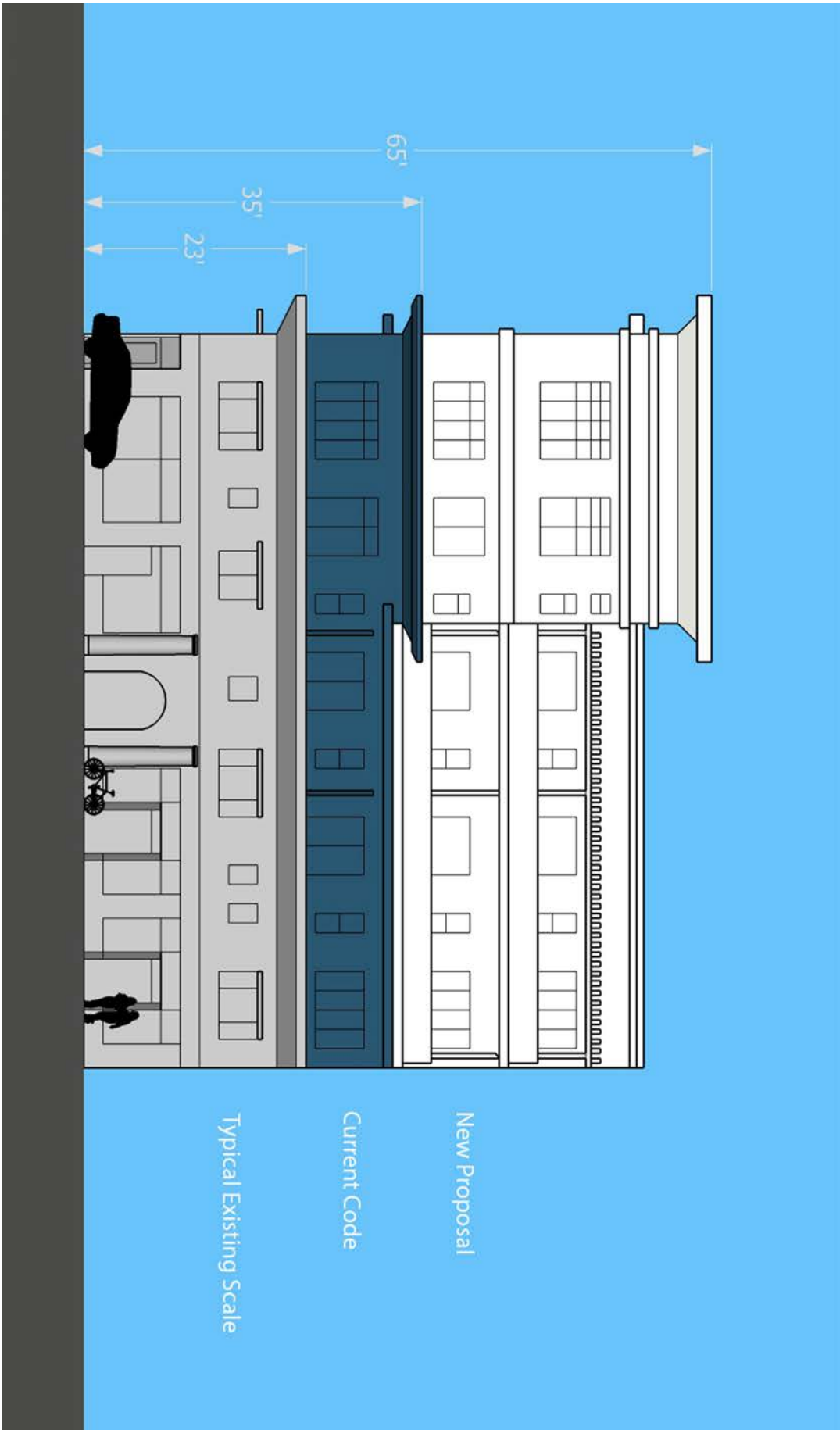
Alhambra Corridor SPD with Base Zoning

- Area not subject to the Residential Buffer Transition Zone
- Proposed New Boundary
- Alhambra Corridor SPD
- R Street SPD
- Central City Boundary
- Parcels
- Highways

Zoning Table

Base Zone	Max Height with SPD (when located within 300 feet of a residential zone.)	Max Height with SPD (when located outside of 300 feet of a residential zone.)	Max Height without SPD												
R-1B	35 ft.	35 ft.	35 ft.												
R-3A	35 ft.	35 ft.	35 ft.												
R-4	35 ft.	45 ft.	45 ft.												
R-4PUD	35 ft.	35 ft.	35 ft.												
R-5	35 ft.	240 ft.	240 ft.												
RMX	35 ft.	45 ft.	45 ft.												
RO	35 ft.	35 ft.	35 ft.												
OB	35 ft.	35 ft.	35 ft.												
C-1	35 ft.	35 ft.	35 ft.												
C-4	35 ft.	75 ft.	75 ft.												
C-2	35 ft.	65 ft.	<p>A. Height. Unless subsection B or C apply, the maximum height is 65 feet.</p> <p>B. Transitional height. Portions of buildings in the C-2 zone within certain distances of the R-1, R-1B, and R-2 zones (<i>property line</i>) shall not exceed the following height limits.</p> <table style="margin-left: 40px;"> <thead> <tr> <th><u>Distance (feet)</u></th> <th><u>Height (feet)</u></th> </tr> </thead> <tbody> <tr> <td>0-39</td> <td>45</td> </tr> <tr> <td>40-79</td> <td>55</td> </tr> <tr> <td>80+</td> <td>65</td> </tr> </tbody> </table>	<u>Distance (feet)</u>	<u>Height (feet)</u>	0-39	45	40-79	55	80+	65				
<u>Distance (feet)</u>	<u>Height (feet)</u>														
0-39	45														
40-79	55														
80+	65														
H	35 ft.	120 ft.	<p>A. Height. Unless subsections B or C apply, the maximum height is 120 feet.</p> <p>B. Transitional height. Portions of buildings in the H zone within certain distances of R-zones (<i>property line</i>) shall not exceed the following height limits.</p> <table style="margin-left: 40px;"> <thead> <tr> <th><u>Distance (feet)</u></th> <th><u>Height (feet)</u></th> </tr> </thead> <tbody> <tr> <td>0-39</td> <td>45</td> </tr> <tr> <td>40-79</td> <td>55</td> </tr> <tr> <td>80-119</td> <td>65</td> </tr> <tr> <td>120-159</td> <td>90</td> </tr> <tr> <td>160+</td> <td>120</td> </tr> </tbody> </table> <p>C. In granting a conditional use permit for a major medical facility, the planning and design commission may permit a height exceeding the limits of subsections A and B.</p>	<u>Distance (feet)</u>	<u>Height (feet)</u>	0-39	45	40-79	55	80-119	65	120-159	90	160+	120
<u>Distance (feet)</u>	<u>Height (feet)</u>														
0-39	45														
40-79	55														
80-119	65														
120-159	90														
160+	120														

Building at Scaled Heights



ORDINANCE NO.

Adopted by the Sacramento City Council
Date Adopted

**AN ORDINANCE AMENDING SECTIONS 17.420.010 AND
17.420.020 OF THE SACRAMENTO CITY CODE, RELATING TO THE
ALHAMBRA CORRIDOR SPECIAL PLANNING DISTRICT**

BE IT ENACTED BY THE COUNCIL OF THE CITY OF SACRAMENTO:

SECTION 1.

The city council finds the following:

1. As amended by this ordinance, the Planning and Development Code complements, supports, and facilitates the implementation of the goals, policies, and other provisions of the general plan and the city's specific plans and transit village plans; and
2. The amendments in this ordinance promote the public health, safety, convenience, and welfare of the city.

SECTION 2.

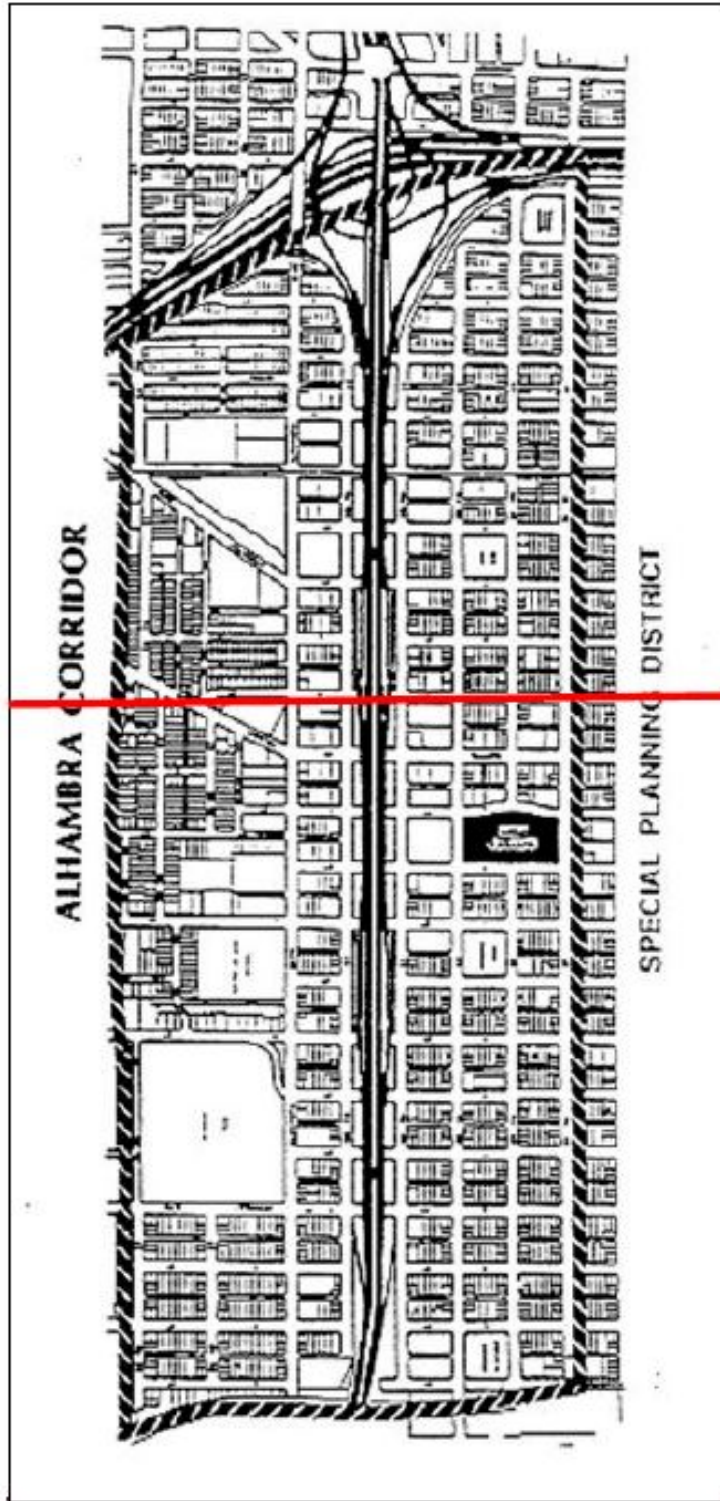
Section 17.420.010 of the Sacramento City Code is amended to read as follows:

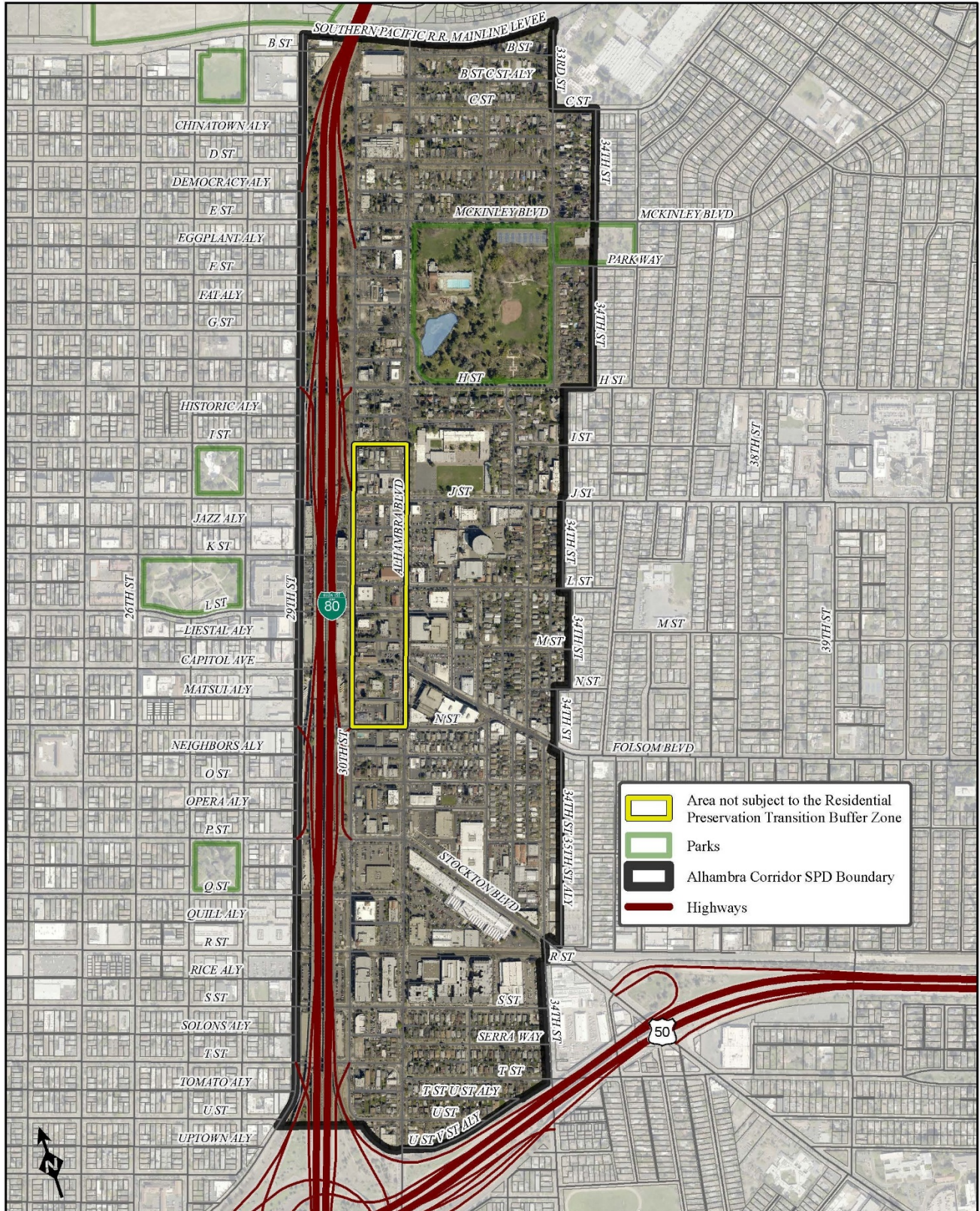
17.420.010 Purpose and intent.

The Alhambra Corridor special planning district (SPD) generally consists of properties located between ~~26th-29th~~ and 34th streets from the Southern Pacific railroad mainline levee to the W/X Freeway. The specific district boundaries are identified on the map in Exhibit A. This district includes a number of different neighborhoods and is intended to assist in the preservation of the neighborhood scale and character, along with providing additional housing opportunities in the area. The goals of the Alhambra Corridor SPD are to:

- A. Maintain and improve the character, quality, and vitality of individual neighborhoods;
- B. Maintain the diverse character and housing opportunities provided in these urban neighborhoods; and
- C. Provide the opportunity for a balanced mixture of uses in neighborhoods adjacent to transit facilities and transportation corridors.

Exhibit A





SECTION 3.

Section 17.420.020 of the Sacramento City Code is amended to read as follows:

17.420.020 Alhambra Corridor special regulations and restrictions.

A. Development within the Alhambra Corridor SPD is subject to the regulations and development standards of this chapter, in addition to the other regulations of this title. The provisions of this chapter prevail over any conflicting provisions of this title.

B. Residential preservation transition buffer zone.

1. ~~General rule~~Height limit. Except as provided ~~below~~ in subsections B.2 and B.3, development located within 300 feet of a residential zone (measured from the street centerline) shall not exceed 35 feet in height. This restriction is intended to establish a residential preservation transition buffer zone to protect residential neighborhoods from visual intrusion by new development that is out of scale with the adjacent residential neighborhood.

2. ~~Exception.~~Conditional use permit. The planning and design commission may approve a conditional use permit allowing additional height, provided that the height may not exceed the limits established by the applicable base zoning chapter. To approve the conditional use permit, the planning and design commission must find that the development will not be out of scale with the adjacent residential neighborhood. An example where the intent of the buffer zone is maintained while allowing additional height is a development incorporating design features or step-backs that reduce the walled effect on adjacent smaller-scaled residential development.

3. Excluded development. Development located within the area bounded by I Street to the north, Alhambra Boulevard to the east, N Street to the south, and 30th Street to the west is exempt from the requirements of subsection B.1.

C. Restricted limited commercial. Property zoned C-1 and located between Granada Way and Folsom Boulevard on the east side of 32nd Street is subject to the following additional provisions:

1. The total building square footage of any structure in the C-1 zone shall not exceed 6,400 square feet, except that the planning and design commission may issue a conditional use permit to exceed 6,400 square feet, subject to a finding that the proposed building scale is compatible with adjacent residential development.

2. Height. The maximum height for this zone is 35 feet.

D. Drive-through services. Drive-through services are prohibited for parcels that abut Alhambra Boulevard and are located in the Alhambra Corridor SPD. This prohibition includes both drive-through services for restaurants and as an accessory use.

ORDINANCE NO.

Adopted by the Sacramento City Council
Date Adopted

AN ORDINANCE AMENDING SECTIONS 17.420.010 AND
17.420.020 OF THE SACRAMENTO CITY CODE, RELATING TO THE
ALHAMBRA CORRIDOR SPECIAL PLANNING DISTRICT

BE IT ENACTED BY THE COUNCIL OF THE CITY OF SACRAMENTO:

SECTION 1.

The city council finds the following:

1. As amended by this ordinance, the Planning and Development Code complements, supports, and facilitates the implementation of the goals, policies, and other provisions of the general plan and the city's specific plans and transit village plans; and
2. The amendments in this ordinance promote the public health, safety, convenience, and welfare of the city.

SECTION 2.

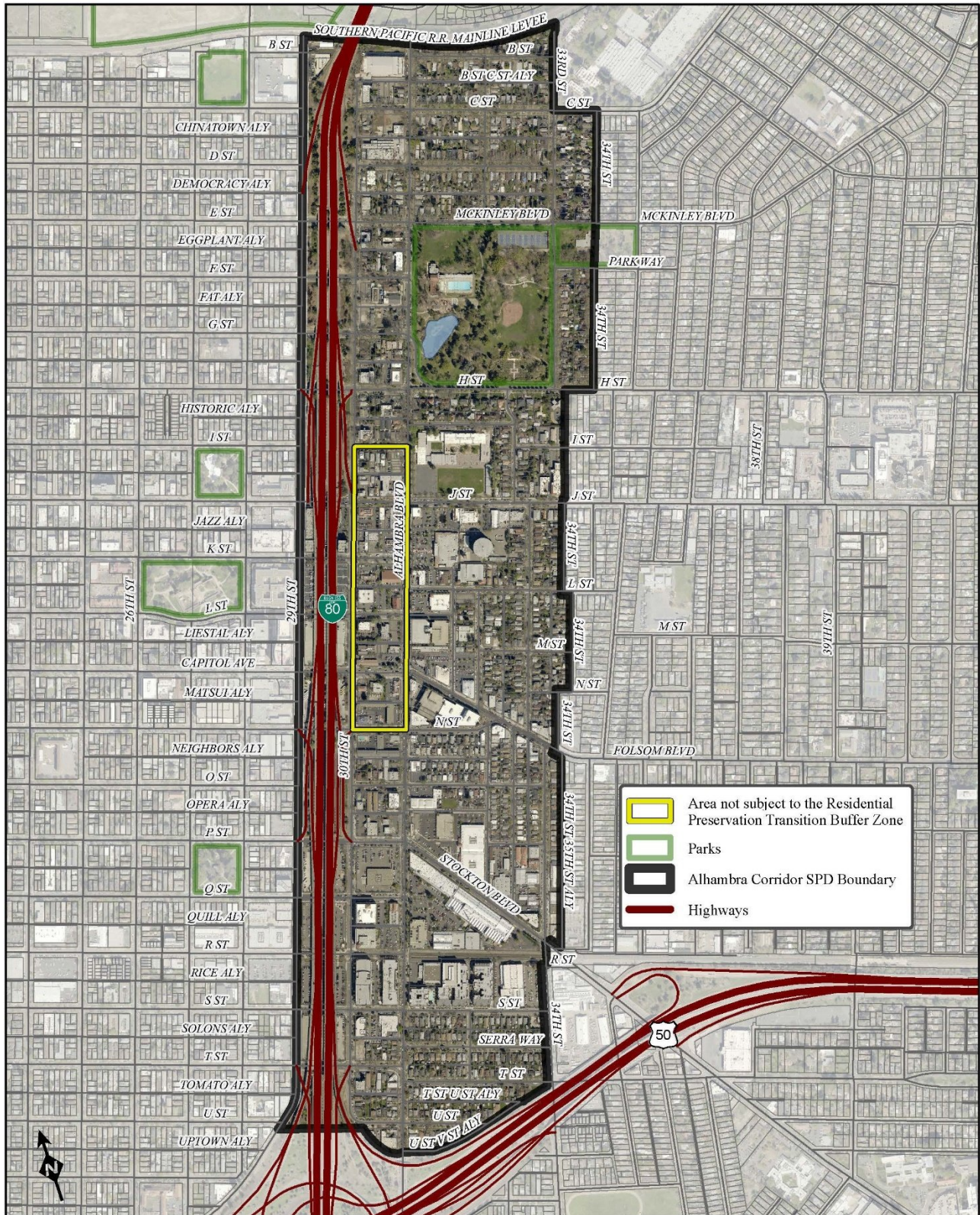
Section 17.420.010 of the Sacramento City Code is amended to read as follows:

17.420.010 Purpose and intent.

The Alhambra Corridor special planning district (SPD) generally consists of properties located between 29th and 34th streets from the Southern Pacific railroad mainline levee to the W/X Freeway. The specific district boundaries are identified on the map in Exhibit A. This district includes a number of different neighborhoods and is intended to assist in the preservation of the neighborhood scale and character, along with providing additional housing opportunities in the area. The goals of the Alhambra Corridor SPD are to:

- A. Maintain and improve the character, quality, and vitality of individual neighborhoods;
- B. Maintain the diverse character and housing opportunities provided in these urban neighborhoods; and
- C. Provide the opportunity for a balanced mixture of uses in neighborhoods adjacent to transit facilities and transportation corridors.

Exhibit A



SECTION 3.

Section 17.420.020 of the Sacramento City Code is amended to read as follows:

17.420.020 Alhambra Corridor special regulations and restrictions.

A. Development within the Alhambra Corridor SPD is subject to the regulations and development standards of this chapter, in addition to the other regulations of this title. The provisions of this chapter prevail over any conflicting provisions of this title.

B. Residential preservation transition buffer zone.

1. Height limit. Except as provided in subsections B.2 and B.3, development located within 300 feet of a residential zone (measured from the street centerline) shall not exceed 35 feet in height. This restriction is intended to establish a residential preservation transition buffer zone to protect residential neighborhoods from visual intrusion by new development that is out of scale with the adjacent residential neighborhood.

2. Conditional use permit. The planning and design commission may approve a conditional use permit allowing additional height, provided that the height may not exceed the limits established by the applicable base zoning chapter. To approve the conditional use permit, the planning and design commission must find that the development will not be out of scale with the adjacent residential neighborhood. An example where the intent of the buffer zone is maintained while allowing additional height is a development incorporating design features or step-backs that reduce the walled effect on adjacent smaller-scaled residential development.

3. Excluded development. Development located within the area bounded by I Street to the north, Alhambra Boulevard to the east, N Street to the south, and 30th Street to the west is exempt from the requirements of subsection B.1.

C. Restricted limited commercial. Property zoned C-1 and located between Granada Way and Folsom Boulevard on the east side of 32nd Street is subject to the following additional provisions:

1. The total building square footage of any structure in the C-1 zone shall not exceed 6,400 square feet, except that the planning and design commission may issue a conditional use permit to exceed 6,400 square feet, subject to a finding that the proposed building scale is compatible with adjacent residential development.

2. Height. The maximum height for this zone is 35 feet.

D. Drive-through services. Drive-through services are prohibited for parcels that abut Alhambra Boulevard and are located in the Alhambra Corridor SPD. This prohibition includes both drive-through services for restaurants and as an accessory use.

Rezone Ordinance

ORDINANCE NO.

Adopted by the Sacramento City Council

AMENDING TITLE 17 OF THE SACRAMENTO CITY CODE TO REZONE VARIOUS PARCELS OF REAL PROPERTY FROM 26TH STREET TO 29TH STREET, BETWEEN THE SOUTHERN PACIFIC RAILROAD LEVEE AND HIGHWAY 50

BE IT ENACTED BY THE COUNCIL OF THE CITY OF SACRAMENTO:

Section 1. Title 17 of the Sacramento City Code (the Planning and Development Code) is amended to rezone the properties from 26th Street to 29th Street, between the Southern Pacific Railroad Levee and Highway 50, depicted in the attached Exhibits A and B and identified by APN and address in the attached Exhibit C, from the existing zone to the proposed zone as set forth in Exhibit C.

Section 2. The rezoning of the property is consistent with the applicable general plan land use designation, use, and development standards; the goals, policies, and other provisions of the general plan and any applicable specific plan; and promotes the public health, safety, convenience, and welfare of the city.

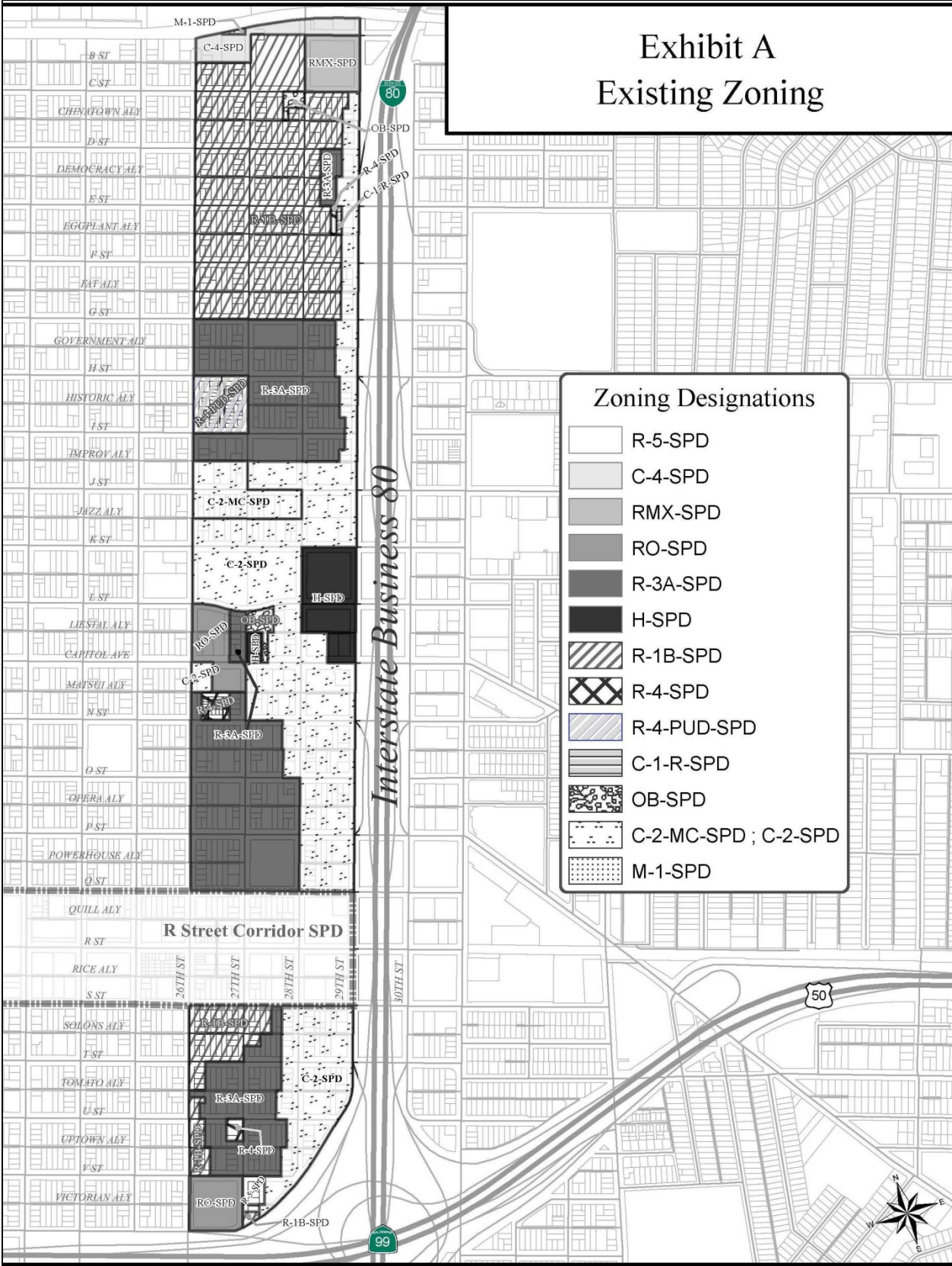
Section 3. The City Clerk of the City of Sacramento is hereby directed to amend the official zoning maps, which are a part of the Planning and Development Code, to conform to the provisions of this Ordinance.

Section 4. Exhibits A, B, and C are part of this ordinance.

Table of Contents:

Exhibit A – Existing Zone Map – 1 page
Exhibit B – Proposed Zone Map – 1 page
Exhibit C – List of Rezone Properties

Exhibit A Existing Zoning



Zoning Designations

[White Box]	R-5-SPD
[Light Gray Box]	C-4-SPD
[Medium Gray Box]	RMX-SPD
[Dark Gray Box]	RO-SPD
[Black Box]	R-3A-SPD
[Black Box]	H-SPD
[Diagonal Lines /]	R-1B-SPD
[Cross-hatch]	R-4-SPD
[Diagonal Lines \]	R-4-PUD-SPD
[Horizontal Lines]	C-1-R-SPD
[Stippled]	OB-SPD
[Dotted]	C-2-MC-SPD ; C-2-SPD
[Dotted]	M-1-SPD

Exhibit B Proposed Zoning

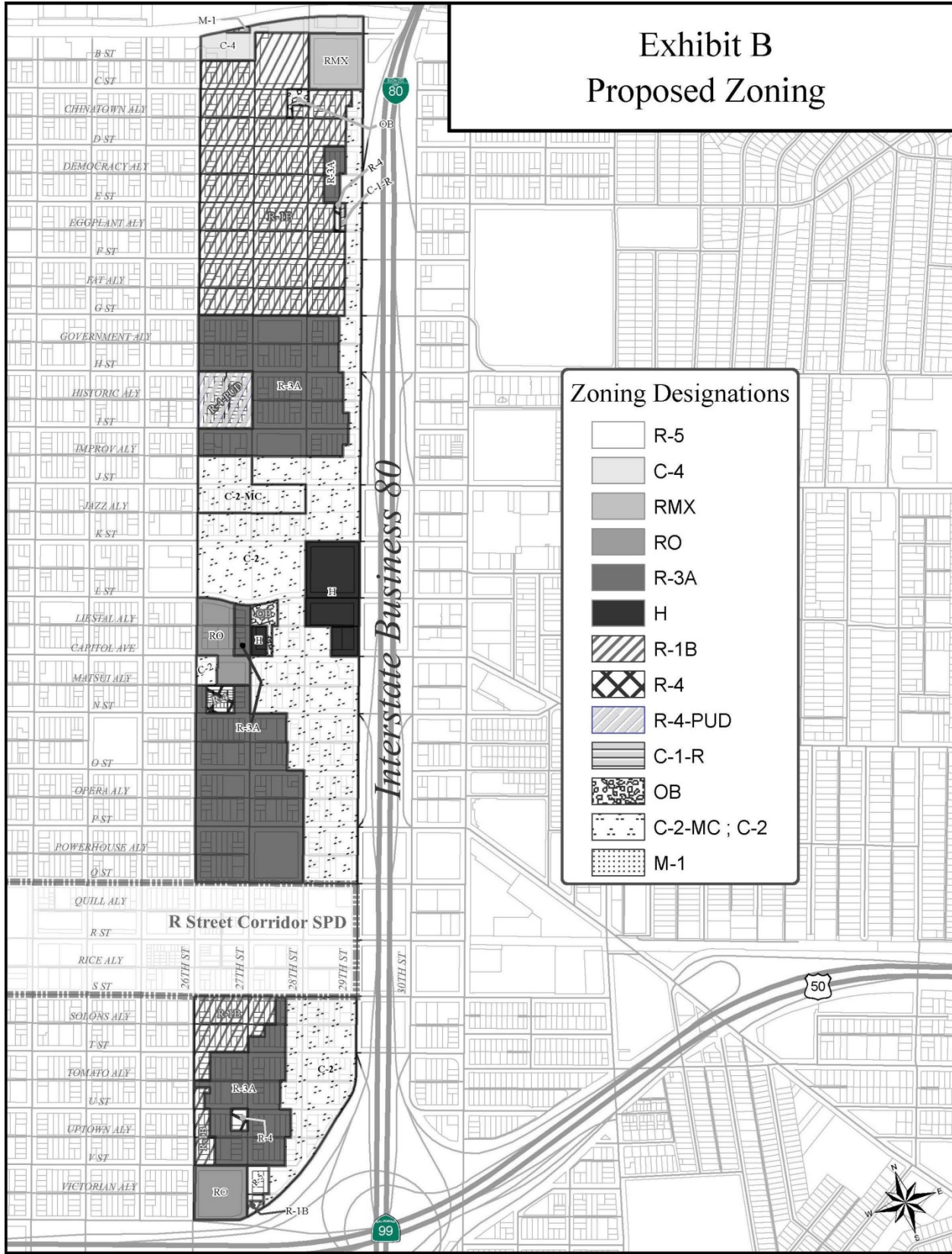


Exhibit C – List of Rezone Properties

Formatted APN	Primary Situs Address	Situs Zip	Existing Zone	Proposed Zone
003-0153-026-0000	2821 E ST	95816	(C-2,C-2-R)-SPD	(C-2,C-2-R)
007-0042-001-0000	915 27TH ST	95816	(C-2,R-3A)-SPD	(C-2,R-3A)
003-0154-008-0000	2820 E ST	95816	C-1-R-SPD	C-1-R
007-0036-021-0000	2623 J ST	95816	C-2-MC-SPD	C-2-MC
007-0111-006-0000	2718 J ST	95816	C-2-MC-SPD	C-2-MC
007-0111-022-0000	2700 J ST	95816	C-2-MC-SPD	C-2-MC
007-0036-008-0000	916 27TH ST	95816	C-2-MC-SPD	C-2-MC
007-0111-025-0000	2708 J ST	95816	C-2-MC-SPD	C-2-MC
007-0105-009-0000	2630 J ST	95816	C-2-MC-SPD	C-2-MC
007-0036-009-0000	920 27TH ST	95816	C-2-MC-SPD	C-2-MC
007-0036-010-0000	928 27TH ST	95816	C-2-MC-SPD	C-2-MC
007-0105-004-0000	2610 J ST	95816	C-2-MC-SPD	C-2-MC
007-0111-001-0000	1015 27TH ST	95816	C-2-MC-SPD	C-2-MC
007-0105-002-0000	2600 J ST	95816	C-2-MC-SPD	C-2-MC
007-0111-020-0000	2728 J ST 201	95816	C-2-MC-SPD	C-2-MC
007-0105-005-0000	2612 J ST	95816	C-2-MC-SPD	C-2-MC
007-0105-010-0000	1008 27TH ST	95816	C-2-MC-SPD	C-2-MC
007-0105-001-0000	1011 26TH ST	95816	C-2-MC-SPD	C-2-MC
007-0105-007-0000	2620 J ST	95816	C-2-MC-SPD	C-2-MC
007-0105-003-0000	2606 J ST	95816	C-2-MC-SPD	C-2-MC
007-0036-011-0000	2627 J ST	95816	C-2-MC-SPD	C-2-MC
007-0105-006-0000	2618 J ST	95816	C-2-MC-SPD	C-2-MC
007-0036-014-0000	2613 J ST	95816	C-2-MC-SPD	C-2-MC
007-0036-020-0000	2601 J ST	95816	C-2-MC-SPD	C-2-MC
007-0105-008-0000	2626 J ST	95816	C-2-MC-SPD	C-2-MC
007-0271-030-0000	1408 28TH ST	95816	C-2-SPD	C-2
007-0105-023-0000	2617 K ST	95816	C-2-SPD	C-2
003-0204-026-0000	2830 G ST	95816	C-2-SPD	C-2
010-0052-010-0000	1900 28TH ST	95816	C-2-SPD	C-2
007-0274-027-0000	1501 28TH ST	95816	C-2-SPD	C-2
010-0123-001-0000	2013 28TH ST	95818	C-2-SPD	C-2
010-0123-022-0000	2021 28TH ST	95818	C-2-SPD	C-2
010-0054-029-0000	2815 SOLONS ALY	95811	C-2-SPD	C-2
010-0123-019-0000	2012 29TH ST	95817	C-2-SPD	C-2
010-0122-017-0000	2128 28TH ST	95818	C-2-SPD	C-2
010-0122-016-0000	2126 28TH ST	95818	C-2-SPD	C-2
007-0274-021-0000	1429 28TH ST 1	95816	C-2-SPD	C-2
007-0105-020-0000	2601 K ST	95816	C-2-SPD	C-2

007-0343-024-0000	1617 28TH ST	95816	C-2-SPD	C-2
010-0054-001-0000	1915 28TH ST	95816	C-2-SPD	C-2
010-0123-021-0000	2020 29TH ST	95817	C-2-SPD	C-2
007-0043-011-0000	810 29TH ST	95816	C-2-SPD	C-2
007-0043-012-0000	810 29TH ST	95816	C-2-SPD	C-2
007-0105-018-0000	2609 K ST	95816	C-2-SPD	C-2
007-0105-015-0000	2621 K ST	95816	C-2-SPD	C-2
007-0273-026-0000	1420 29TH ST	95816	C-2-SPD	C-2
007-0273-017-0000	1423 28TH ST	95816	C-2-SPD	C-2
007-0274-023-0000	1517 28TH ST	95816	C-2-SPD	C-2
007-0274-022-0000	1517 28TH ST	95816	C-2-SPD	C-2
003-0203-011-0000	608 29TH ST	95816	C-2-SPD	C-2
010-0052-015-0000	1918 28TH ST	95816	C-2-SPD	C-2
007-0113-026-0000	2812 J ST	95816	C-2-SPD	C-2
007-0111-019-0000	2701 K ST	95816	C-2-SPD	C-2
003-0153-012-0000	414 29TH ST	95816	C-2-SPD	C-2
010-0052-014-0000	1916 28TH ST	95816	C-2-SPD	C-2
010-0054-021-0000	2801 T ST	95816	C-2-SPD	C-2
003-0203-009-0000	2824 F ST	95816	C-2-SPD	C-2
010-0124-002-0000	2111 28TH ST	95818	C-2-SPD	C-2
010-0122-012-0000	2108 28TH ST	95818	C-2-SPD	C-2
007-0111-013-0000	2731 K ST	95816	C-2-SPD	C-2
007-0111-012-0000	1020 28TH ST	95816	C-2-SPD	C-2
007-0111-011-0000	1016 28TH ST	95816	C-2-SPD	C-2
007-0274-001-0000	1515 28TH ST	95816	C-2-SPD	C-2
010-0052-016-0000	1926 28TH ST	95816	C-2-SPD	C-2
010-0122-014-0000	2114 28TH ST	95818	C-2-SPD	C-2
007-0343-029-0000	1616 29TH ST	95816	C-2-SPD	C-2
007-0113-033-0000	2801 K ST	95816	C-2-SPD	C-2
010-0124-027-0000	2117 28TH ST	95818	C-2-SPD	C-2
010-0127-012-0000	2014 28TH ST	95818	C-2-SPD	C-2
010-0122-011-0000	2100 28TH ST	95818	C-2-SPD	C-2
007-0105-025-0000	2627 K ST	95816	C-2-SPD	C-2
007-0343-022-0000	1625 28TH ST	95816	C-2-SPD	C-2
007-0274-019-0000	2811 P ST	95816	C-2-SPD	C-2
003-0104-027-0000	312 29TH ST	95816	C-2-SPD	C-2
007-0044-011-0000	908 29TH ST	95816	C-2-SPD	C-2
010-0054-009-0000	2822 S ST	95816	C-2-SPD	C-2
007-0273-011-0000	2827 O ST	95816	C-2-SPD	C-2
010-0054-002-0000	1911 28TH ST	95816	C-2-SPD	C-2
010-0123-024-0000	T ST	95816	C-2-SPD	C-2
010-0123-023-0000	2820 T ST	95816	C-2-SPD	C-2
003-0104-016-0000	2827 D ST	95816	C-2-SPD	C-2

010-0123-007-0000	2824 T ST	95816	C-2-SPD	C-2
010-0123-010-0000	2014 29TH ST	95817	C-2-SPD	C-2
010-0054-007-0000	2812 S ST	95816	C-2-SPD	C-2
010-0054-004-0000	2800 S ST	95816	C-2-SPD	C-2
010-0054-005-0000	2810 S ST	95816	C-2-SPD	C-2
010-0054-024-0000	1920 29TH ST	95816	C-2-SPD	C-2
010-0054-028-0000	2821 SOLONS ALY	95811	C-2-SPD	C-2
010-0054-018-0000	2817 T ST	95816	C-2-SPD	C-2
010-0115-001-0000	2013 26TH ST	95818	C-2-SPD	C-2
007-0343-026-0000	2820 P ST	95816	C-2-SPD	C-2
010-0124-003-0000	2101 28TH ST	95818	C-2-SPD	C-2
010-0124-030-0000	2100 29TH ST	95817	C-2-SPD	C-2
003-0104-013-0000	316 29TH ST	95816	C-2-SPD	C-2
003-0104-014-0000	320 29TH ST	95816	C-2-SPD	C-2
003-0104-015-0000	324 29TH ST 1	95816	C-2-SPD	C-2
010-0054-019-0000	2815 T ST	95816	C-2-SPD	C-2
007-0043-015-0000	2831 I ST	95816	C-2-SPD	C-2
010-0124-001-0000	2115 28TH ST	95818	C-2-SPD	C-2
007-0343-002-0000	1611 28TH ST	95816	C-2-SPD	C-2
003-0203-025-0000	2831 G ST	95816	C-2-SPD	C-2
003-0203-013-0000	616 29TH ST	95816	C-2-SPD	C-2
007-0111-018-0000	2705 K ST	95816	C-2-SPD	C-2
003-0104-026-0000	308 29TH ST	95816	C-2-SPD	C-2
003-0104-025-0000	2832 C ST	95816	C-2-SPD	C-2
007-0274-008-0000	2820 O ST	95816	C-2-SPD	C-2
007-0343-004-0000	1601 28TH ST	95816	C-2-SPD	C-2
007-0343-006-0000	2812 P ST	95816	C-2-SPD	C-2
007-0343-005-0000	2808 P ST	95816	C-2-SPD	C-2
003-0203-012-0000	614 29TH ST	95816	C-2-SPD	C-2
007-0271-028-0000	1422 28TH ST	95816	C-2-SPD	C-2
003-0153-023-0000	400 29TH ST	95816	C-2-SPD	C-2
007-0166-016-0000	2600 CAPITOL AVE	95816	C-2-SPD	C-2
003-0203-010-0000	2830 F ST	95816	C-2-SPD	C-2
007-0044-010-0000	2830 I ST	95816	C-2-SPD	C-2
007-0043-013-0000	820 29TH ST	95816	C-2-SPD	C-2
007-0043-014-0000	820 29TH ST	95816	C-2-SPD	C-2
010-0127-015-0000	2026 28TH ST	95818	C-2-SPD	C-2
007-0105-021-0000	1019 26TH ST	95816	C-2-SPD	C-2
010-0054-022-0000	1921 28TH ST	95816	C-2-SPD	C-2
010-0054-003-0000	1907 28TH ST	95816	C-2-SPD	C-2
010-0127-010-0000	2006 28TH ST	95818	C-2-SPD	C-2
010-0187-009-0000	2730 VICTORIAN ALY	95818	C-2-SPD	C-2
010-0054-025-0000	1910 29TH ST	95816	C-2-SPD	C-2

010-0124-031-0000	2121 28TH ST	95818	C-2-SPD	C-2
010-0127-009-0000	2722 T ST	95816	C-2-SPD	C-2
007-0111-014-0000	2727 K ST	95816	C-2-SPD	C-2
007-0343-021-0000	2801 Q ST	95816	C-2-SPD	C-2
007-0274-011-0000	1510 29TH ST	95816	C-2-SPD	C-2
010-0123-005-0000	2816 T ST	95816	C-2-SPD	C-2
007-0044-012-0000	914 29TH ST	95816	C-2-SPD	C-2
007-0043-009-0000	2826 H ST	95816	C-2-SPD	C-2
010-0122-015-0000	2116 28TH ST	95818	C-2-SPD	C-2
010-0054-026-0000	1900 29TH ST	95816	C-2-SPD	C-2
007-0273-018-0000	1419 28TH ST	95816	C-2-SPD	C-2
007-0273-019-0000	1417 28TH ST	95816	C-2-SPD	C-2
007-0271-010-0000	1404 28TH ST	95816	C-2-SPD	C-2
007-0172-021-0000	1308 28TH ST	95816	C-2-SPD	C-2
007-0172-020-0000	2728 CAPITOL AVE	95816	C-2-SPD	C-2
007-0271-008-0000	2726 N ST	95816	C-2-SPD	C-2
007-0271-009-0000	2730 N ST	95816	C-2-SPD	C-2
007-0273-002-0000	1401 28TH ST	95816	C-2-SPD	C-2
010-0127-014-0000	2022 28TH ST	95818	C-2-SPD	C-2
007-0343-020-0000	2809 Q ST	95816	C-2-SPD	C-2
007-0111-016-0000	2715 K ST	95816	C-2-SPD	C-2
003-0154-012-0000	514 29TH ST	95816	C-2-SPD	C-2
003-0154-025-0000	2827 F ST	95816	C-2-SPD	C-2
003-0154-026-0000	2828 E ST	95816	C-2-SPD	C-2
010-0123-003-0000	2808 T ST	95816	C-2-SPD	C-2
010-0123-004-0000	2812 T ST	95816	C-2-SPD	C-2
010-0127-016-0000	2030 28TH ST	95818	C-2-SPD	C-2
010-0127-011-0000	2008 28TH ST	95818	C-2-SPD	C-2
007-0343-007-0000	2816 P ST	95816	C-2-SPD	C-2
007-0271-016-0000	1430 28TH ST	95816	C-2-SPD	C-2
010-0052-013-0000	1914 28TH ST	95816	C-2-SPD	C-2
010-0054-020-0000	2809 T ST	95816	C-2-SPD	C-2
010-0123-014-0000	2823 U ST	95817	C-2-SPD	C-2
007-0274-018-0000	2813 P ST	95816	C-2-SPD	C-2
007-0111-015-0000	2719 K ST	95816	C-2-SPD	C-2
010-0054-023-0000	1917 28TH ST	95816	C-2-SPD	C-2
007-0273-022-0000	1400 29TH ST	95816	C-2-SPD	C-2
007-0273-008-0000	1414 29TH ST	95816	C-2-SPD	C-2
007-0273-003-0000	2812 N ST	95816	C-2-SPD	C-2
007-0274-026-0000	2831 P ST	95816	C-2-SPD	C-2
007-0174-004-0000	1301 28TH ST	95816	C-2-SPD	C-2
007-0174-005-0000	2830 CAPITOL AVE	95816	C-2-SPD	C-2
007-0274-012-0000	1514 29TH ST	95816	C-2-SPD	C-2

007-0273-014-0000	2815 O ST	95816	C-2-SPD	C-2
007-0273-015-0000	2815 O ST	95816	C-2-SPD	C-2
007-0273-004-0000	2824 N ST	95816	C-2-SPD	C-2
007-0274-013-0000	1516 29TH ST	95816	C-2-SPD	C-2
007-0174-003-0000	1323 28TH ST	95816	C-2-SPD	C-2
007-0105-022-0000	1017 26TH ST	95816	C-2-SPD	C-2
007-0343-019-0000	2813 Q ST 205	95816	C-2-SPD	C-2
007-0343-023-0000	1621 28TH ST	95816	C-2-SPD	C-2
010-0054-030-0000	2819 SOLONS ALY	95811	C-2-SPD	C-2
007-0274-009-0000	2826 O ST	95816	C-2-SPD	C-2
007-0274-020-0000	2805 P ST	95816	C-2-SPD	C-2
007-0044-023-0000	2801 J ST	95816	C-2-SPD	C-2
010-0052-011-0000	1904 28TH ST	95816	C-2-SPD	C-2
010-0187-006-0000	2716 V ST	95818	C-2-SPD	C-2
007-0273-025-0000	2801 O ST	95816	C-2-SPD	C-2
007-0112-001-0000	K ST	95816	C-2-SPD	C-2
007-0106-001-0000	2618 K ST	95816	C-2-SPD	C-2
010-0127-013-0000	2016 28TH ST	95818	C-2-SPD	C-2
007-0274-007-0000	2818 O ST	95816	C-2-SPD	C-2
007-0274-006-0000	2816 O ST	95816	C-2-SPD	C-2
007-0113-034-0000	2828 J ST	95816	C-2-SPD	C-2
007-0171-007-0000	2727 CAPITOL AVE	95816	C-2-SPD	C-2
007-0172-016-0000	1317 27TH ST	95816	C-2-SPD	C-2
007-0172-017-0000	2720 CAPITOL AVE	95816	C-2-SPD	C-2
007-0171-004-0000	1216 28TH ST	95816	C-2-SPD	C-2
007-0172-014-0000	2720 CAPITOL AVE	95816	C-2-SPD	C-2
007-0172-019-0000	2720 CAPITOL AVE	95816	C-2-SPD	C-2
007-0171-006-0000	2731 CAPITOL AVE	95816	C-2-SPD	C-2
007-0172-018-0000	2701 N ST	95816	C-2-SPD	C-2
007-0171-003-0000	2730 L ST	95816	C-2-SPD	C-2
007-0171-002-0000	2722 L ST	95816	C-2-SPD	C-2
007-0171-005-0000	2731 CAPITOL AVE	95816	C-2-SPD	C-2
007-0171-008-0000	2725 CAPITOL AVE	95816	C-2-SPD	C-2
007-0172-010-0000	2720 CAPITOL AVE	95816	C-2-SPD	C-2
007-0172-013-0000	2720 CAPITOL AVE	95816	C-2-SPD	C-2
007-0173-004-0000	2801 CAPITOL AVE	95816	C-2-SPD	C-2
007-0171-017-0000	2715 CAPITOL AVE	95816	C-2-SPD	C-2
007-0113-032-0000	1020 29TH ST	95816	C-2-SPD	C-2
007-0043-010-0000	2830 H ST	95816	C-2-SPD	C-2
007-0111-017-0000	2709 K ST	95816	C-2-SPD	C-2
007-0172-003-0000	2706 CAPITOL AVE	95816	C-2-SPD	C-2
007-0172-005-0000	2720 CAPITOL AVE	95816	C-2-SPD	C-2
007-0172-001-0000	1315 27TH ST	95816	C-2-SPD	C-2

007-0172-002-0000	2700 CAPITOL AVE	95816	C-2-SPD	C-2
007-0172-004-0000	2710 CAPITOL AVE	95816	C-2-SPD	C-2
003-0204-023-0000	2831 H ST	95816	C-2-SPD	C-2
010-0054-008-0000	2816 S ST	95816	C-2-SPD	C-2
007-0343-001-0000	1615 28TH ST	95816	C-2-SPD	C-2
007-0105-019-0000	2605 K ST	95816	C-2-SPD	C-2
007-0343-018-0000	2817 Q ST	95816	C-2-SPD	C-2
010-0054-027-0000	2817 SOLONS ALY	95811	C-2-SPD	C-2
007-0273-001-0000	1409 28TH ST	95816	C-2-SPD	C-2
010-0122-013-0000	2112 28TH ST	95818	C-2-SPD	C-2
007-0274-010-0000	2830 O ST	95816	C-2-SPD	C-2
007-0274-005-0000	2810 O ST	95816	C-2-SPD	C-2
010-0123-002-0000	2800 T ST	95816	C-2-SPD	C-2
010-0052-012-0000	1906 28TH ST	95816	C-2-SPD	C-2
003-0095-028-0000	200 27TH ST	95816	C-4-SPD	C-4
003-0050-010-0000	2727 B ST	95816	C-4-SPD	C-4
003-0095-029-0000	213 26TH ST	95816	C-4-SPD	C-4
003-0095-030-0000	205 26TH ST	95816	C-4-SPD	C-4
003-0050-009-0000	2829 B ST	95816	C-4-SPD	C-4
003-0050-006-0000	2805 B ST	95816	C-4-SPD	C-4
003-0050-008-0000	2809 B ST	95816	C-4-SPD	C-4
003-0095-001-0000	215 26TH ST	95816	C-4-SPD	C-4
007-0171-016-0000	2701 CAPITOL AVE	95816	H-SPD	H
007-0173-001-0000	2800 L ST	95816	H-SPD	H
007-0173-002-0000	2831 CAPITOL AVE	95816	H-SPD	H
007-0173-003-0000	2815 CAPITOL AVE	95816	H-SPD	H
007-0114-003-0000	2801 L ST	95816	H-SPD	H
003-0042-003-0000	B ST	95816	M-1-SPD	M-1
007-0171-001-0000	2700 L ST	95816	OB-SPD	OB
003-0102-026-0000	2728 C ST	95816	OB-SPD	OB
003-0102-025-0000	2720 C ST	95816	OB-SPD	OB
007-0171-011-0000	2711 CAPITOL AVE	95816	OB-SPD	OB
003-0096-008-0000	2620 C ST 4	95816	R-1B-SPD	R-1B
010-0046-022-0000	2601 T ST	95816	R-1B-SPD	R-1B
003-0153-003-0000	405 28TH ST	95816	R-1B-SPD	R-1B
003-0153-021-0000	421 28TH ST	95816	R-1B-SPD	R-1B
003-0203-021-0000	2805 G ST	95816	R-1B-SPD	R-1B
003-0152-014-0000	2727 F ST	95816	R-1B-SPD	R-1B
003-0152-013-0000	520 28TH ST	95816	R-1B-SPD	R-1B
003-0201-002-0000	607 27TH ST	95816	R-1B-SPD	R-1B
003-0195-013-0000	616 27TH ST	95816	R-1B-SPD	R-1B
003-0195-011-0000	610 27TH ST	95816	R-1B-SPD	R-1B
003-0102-011-0000	314 28TH ST	95816	R-1B-SPD	R-1B

003-0146-018-0000	2619 F ST	95816	R-1B-SPD	R-1B
003-0146-024-0000	517 26TH ST	95816	R-1B-SPD	R-1B
003-0203-001-0000	615 28TH ST	95816	R-1B-SPD	R-1B
010-0046-009-0000	2626 S ST	95816	R-1B-SPD	R-1B
003-0146-014-0000	520 27TH ST	95816	R-1B-SPD	R-1B
003-0153-001-0000	415 28TH ST 3	95816	R-1B-SPD	R-1B
003-0151-005-0000	2710 D ST	95816	R-1B-SPD	R-1B
010-0046-005-0000	2608 S ST	95816	R-1B-SPD	R-1B
003-0102-013-0000	320 28TH ST	95816	R-1B-SPD	R-1B
010-0115-021-0000	2601 U ST	95818	R-1B-SPD	R-1B
003-0201-016-0000	2727 G ST	95816	R-1B-SPD	R-1B
003-0096-007-0000	2618 C ST 7	95816	R-1B-SPD	R-1B
003-0195-001-0000	615 26TH ST	95816	R-1B-SPD	R-1B
003-0152-023-0000	2712 E ST	95816	R-1B-SPD	R-1B
003-0096-024-0000	317 26TH ST	95816	R-1B-SPD	R-1B
003-0152-005-0000	2710 E ST	95816	R-1B-SPD	R-1B
003-0096-012-0000	314 27TH ST	95816	R-1B-SPD	R-1B
003-0201-011-0000	608 28TH ST	95816	R-1B-SPD	R-1B
003-0095-021-0000	2615 C ST	95816	R-1B-SPD	R-1B
003-0145-019-0000	2619 E ST 6	95816	R-1B-SPD	R-1B
010-0116-020-0000	2127 26TH ST	95818	R-1B-SPD	R-1B
003-0104-022-0000	2801 D ST 4	95816	R-1B-SPD	R-1B
003-0104-023-0000	321 28TH ST	95816	R-1B-SPD	R-1B
003-0201-018-0000	2719 G ST	95816	R-1B-SPD	R-1B
003-0152-010-0000	2730 E ST	95816	R-1B-SPD	R-1B
003-0146-017-0000	2621 F ST	95816	R-1B-SPD	R-1B
003-0195-006-0000	2612 F ST	95816	R-1B-SPD	R-1B
003-0146-001-0000	515 26TH ST 4	95816	R-1B-SPD	R-1B
003-0151-004-0000	2704 D ST	95816	R-1B-SPD	R-1B
003-0201-023-0000	619 27TH ST	95816	R-1B-SPD	R-1B
003-0104-003-0000	2800 C ST	95816	R-1B-SPD	R-1B
003-0104-004-0000	2808 C ST	95816	R-1B-SPD	R-1B
003-0201-017-0000	2721 G ST	95816	R-1B-SPD	R-1B
003-0096-020-0000	2609 D ST B	95816	R-1B-SPD	R-1B
003-0151-021-0000	2705 E ST	95816	R-1B-SPD	R-1B
003-0195-010-0000	604 27TH ST	95816	R-1B-SPD	R-1B
003-0102-023-0000	317 27TH ST	95816	R-1B-SPD	R-1B
010-0046-013-0000	1916 27TH ST	95816	R-1B-SPD	R-1B
003-0195-024-0000	617 26TH ST	95816	R-1B-SPD	R-1B
003-0195-007-0000	2618 F ST	95816	R-1B-SPD	R-1B
003-0201-020-0000	2709 G ST	95816	R-1B-SPD	R-1B
010-0046-006-0000	2612 S ST 2	95816	R-1B-SPD	R-1B
003-0203-024-0000	617 28TH ST	95816	R-1B-SPD	R-1B

010-0052-023-0000	1921 27TH ST	95816	R-1B-SPD	R-1B
003-0096-009-0000	300 27TH ST	95816	R-1B-SPD	R-1B
003-0101-001-0000	205 27TH ST	95816	R-1B-SPD	R-1B
003-0096-013-0000	316 27TH ST	95816	R-1B-SPD	R-1B
003-0152-018-0000	2711 F ST	95816	R-1B-SPD	R-1B
003-0146-005-0000	2608 E ST	95816	R-1B-SPD	R-1B
003-0146-021-0000	2605 F ST	95816	R-1B-SPD	R-1B
003-0203-002-0000	607 28TH ST	95816	R-1B-SPD	R-1B
003-0201-001-0000	615 27TH ST	95816	R-1B-SPD	R-1B
010-0046-016-0000	2625 T ST	95816	R-1B-SPD	R-1B
003-0104-008-0000	2820 C ST	95816	R-1B-SPD	R-1B
010-0046-004-0000	2604 S ST	95816	R-1B-SPD	R-1B
010-0046-003-0000	2600 S ST	95816	R-1B-SPD	R-1B
003-0096-023-0000	321 26TH ST	95816	R-1B-SPD	R-1B
003-0203-018-0000	2817 G ST	95816	R-1B-SPD	R-1B
003-0195-015-0000	2631 G ST	95816	R-1B-SPD	R-1B
003-0095-027-0000	217 26TH ST	95816	R-1B-SPD	R-1B
003-0154-001-0000	515 28TH ST	95816	R-1B-SPD	R-1B
003-0201-009-0000	2728 F ST	95816	R-1B-SPD	R-1B
003-0151-018-0000	2713 E ST	95816	R-1B-SPD	R-1B
003-0146-019-0000	2615 F ST 6	95816	R-1B-SPD	R-1B
003-0146-006-0000	2614 E ST	95816	R-1B-SPD	R-1B
003-0096-015-0000	328 27TH ST	95816	R-1B-SPD	R-1B
010-0046-010-0000	2630 S ST	95816	R-1B-SPD	R-1B
003-0203-020-0000	2811 G ST	95816	R-1B-SPD	R-1B
003-0095-022-0000	2613 C ST	95816	R-1B-SPD	R-1B
003-0145-024-0000	421 26TH ST	95816	R-1B-SPD	R-1B
003-0154-006-0000	2816 E ST	95816	R-1B-SPD	R-1B
010-0046-008-0000	2620 S ST	95816	R-1B-SPD	R-1B
010-0052-024-0000	1917 27TH ST	95816	R-1B-SPD	R-1B
003-0195-004-0000	2604 F ST	95816	R-1B-SPD	R-1B
003-0195-014-0000	620 27TH ST	95816	R-1B-SPD	R-1B
003-0104-007-0000	2816 C ST	95816	R-1B-SPD	R-1B
003-0201-024-0000	617 27TH ST	95816	R-1B-SPD	R-1B
003-0203-004-0000	2804 F ST	95816	R-1B-SPD	R-1B
003-0195-005-0000	2610 F ST	95816	R-1B-SPD	R-1B
003-0095-018-0000	2631 C ST	95816	R-1B-SPD	R-1B
003-0146-022-0000	527 26TH ST	95816	R-1B-SPD	R-1B
010-0116-001-0000	2115 26TH ST	95818	R-1B-SPD	R-1B
003-0095-016-0000	216 27TH ST	95816	R-1B-SPD	R-1B
003-0104-009-0000	2826 C ST	95816	R-1B-SPD	R-1B
003-0104-005-0000	2814 C ST	95816	R-1B-SPD	R-1B
010-0052-002-0000	1909 27TH ST	95816	R-1B-SPD	R-1B

003-0145-016-0000	2631 E ST	95816	R-1B-SPD	R-1B
003-0146-003-0000	2600 E ST	95816	R-1B-SPD	R-1B
003-0152-002-0000	513 27TH ST	95816	R-1B-SPD	R-1B
010-0046-019-0000	2613 T ST	95816	R-1B-SPD	R-1B
003-0146-015-0000	2631 F ST	95816	R-1B-SPD	R-1B
003-0096-022-0000	2601 D ST	95816	R-1B-SPD	R-1B
003-0095-017-0000	220 27TH ST	95816	R-1B-SPD	R-1B
003-0102-014-0000	2731 D ST	95816	R-1B-SPD	R-1B
003-0096-025-0000	2621 D ST 8	95816	R-1B-SPD	R-1B
003-0151-023-0000	423 27TH ST	95816	R-1B-SPD	R-1B
003-0154-023-0000	521 28TH ST	95816	R-1B-SPD	R-1B
003-0152-012-0000	514 28TH ST	95816	R-1B-SPD	R-1B
003-0151-012-0000	414 28TH ST	95816	R-1B-SPD	R-1B
003-0095-026-0000	221 26TH ST	95816	R-1B-SPD	R-1B
003-0145-006-0000	2612 D ST	95816	R-1B-SPD	R-1B
003-0145-021-0000	2609 E ST	95816	R-1B-SPD	R-1B
003-0146-002-0000	513 26TH ST	95816	R-1B-SPD	R-1B
003-0151-020-0000	2709 E ST	95816	R-1B-SPD	R-1B
003-0201-004-0000	2706 F ST	95816	R-1B-SPD	R-1B
010-0046-018-0000	2617 T ST	95816	R-1B-SPD	R-1B
003-0104-017-0000	2823 D ST 7	95816	R-1B-SPD	R-1B
003-0152-003-0000	503 27TH ST	95816	R-1B-SPD	R-1B
003-0145-014-0000	416 27TH ST	95816	R-1B-SPD	R-1B
010-0046-007-0000	2618 S ST	95816	R-1B-SPD	R-1B
003-0095-023-0000	2609 C ST	95816	R-1B-SPD	R-1B
003-0203-006-0000	2814 F ST	95816	R-1B-SPD	R-1B
003-0195-022-0000	2601 G ST	95816	R-1B-SPD	R-1B
003-0153-022-0000	417 28TH ST	95816	R-1B-SPD	R-1B
010-0046-002-0000	1909 26TH ST	95816	R-1B-SPD	R-1B
003-0195-021-0000	2605 G ST	95816	R-1B-SPD	R-1B
003-0095-019-0000	2625 C ST	95816	R-1B-SPD	R-1B
003-0201-012-0000	614 28TH ST	95816	R-1B-SPD	R-1B
003-0102-022-0000	321 27TH ST 3	95816	R-1B-SPD	R-1B
007-0343-003-0000	1605 28TH ST	95816	R-1B-SPD	R-1B
003-0102-001-0000	311 27TH ST 4	95816	R-1B-SPD	R-1B
003-0102-002-0000	309 27TH ST D	95816	R-1B-SPD	R-1B
003-0151-010-0000	2730 D ST	95816	R-1B-SPD	R-1B
003-0203-008-0000	2820 F ST	95816	R-1B-SPD	R-1B
003-0102-018-0000	2715 D ST 9	95816	R-1B-SPD	R-1B
003-0195-008-0000	2620 F ST	95816	R-1B-SPD	R-1B
010-0116-019-0000	2131 26TH ST	95818	R-1B-SPD	R-1B
003-0145-008-0000	2620 D ST	95816	R-1B-SPD	R-1B
003-0104-006-0000	2812 C ST	95816	R-1B-SPD	R-1B

010-0046-015-0000	2631 T ST	95816	R-1B-SPD	R-1B
003-0201-005-0000	2708 F ST	95816	R-1B-SPD	R-1B
003-0151-006-0000	2714 D ST	95816	R-1B-SPD	R-1B
003-0145-002-0000	405 26TH ST	95816	R-1B-SPD	R-1B
003-0096-016-0000	2625 D ST	95816	R-1B-SPD	R-1B
003-0145-018-0000	2625 E ST	95816	R-1B-SPD	R-1B
003-0151-022-0000	2701 E ST	95816	R-1B-SPD	R-1B
003-0146-008-0000	2620 E ST	95816	R-1B-SPD	R-1B
003-0102-021-0000	2701 D ST	95816	R-1B-SPD	R-1B
003-0153-019-0000	2805 E ST	95816	R-1B-SPD	R-1B
010-0046-021-0000	2605 T ST	95816	R-1B-SPD	R-1B
003-0203-017-0000	2821 G ST	95816	R-1B-SPD	R-1B
010-0046-001-0000	1915 26TH ST	95816	R-1B-SPD	R-1B
003-0195-009-0000	602 27TH ST	95816	R-1B-SPD	R-1B
007-0272-022-0000	1525 27TH ST	95816	R-1B-SPD	R-1B
003-0203-003-0000	2800 F ST	95816	R-1B-SPD	R-1B
003-0195-025-0000	2617 G ST	95816	R-1B-SPD	R-1B
003-0151-019-0000	2711 E ST 4	95816	R-1B-SPD	R-1B
010-0116-022-0000	2117 26TH ST	95818	R-1B-SPD	R-1B
003-0146-020-0000	2609 F ST	95816	R-1B-SPD	R-1B
010-0115-022-0000	2019 26TH ST	95818	R-1B-SPD	R-1B
003-0102-004-0000	301 27TH ST	95816	R-1B-SPD	R-1B
003-0151-007-0000	2718 D ST	95816	R-1B-SPD	R-1B
003-0195-002-0000	611 26TH ST	95816	R-1B-SPD	R-1B
003-0151-017-0000	2721 E ST	95816	R-1B-SPD	R-1B
003-0102-016-0000	2721 D ST	95816	R-1B-SPD	R-1B
010-0187-008-0000	2221 27TH ST	95818	R-1B-SPD	R-1B
003-0151-016-0000	2727 E ST	95816	R-1B-SPD	R-1B
003-0201-021-0000	2705 G ST	95816	R-1B-SPD	R-1B
003-0203-019-0000	2815 G ST	95816	R-1B-SPD	R-1B
003-0102-027-0000	2708 C ST 9	95816	R-1B-SPD	R-1B
003-0146-016-0000	2625 F ST	95816	R-1B-SPD	R-1B
003-0145-020-0000	2615 E ST B	95816	R-1B-SPD	R-1B
003-0201-019-0000	2715 G ST	95816	R-1B-SPD	R-1B
003-0154-024-0000	517 28TH ST	95816	R-1B-SPD	R-1B
003-0146-012-0000	514 27TH ST 3	95816	R-1B-SPD	R-1B
003-0102-010-0000	310 28TH ST 2	95816	R-1B-SPD	R-1B
010-0052-007-0000	2714 S ST	95816	R-1B-SPD	R-1B
010-0052-006-0000	2712 S ST	95816	R-1B-SPD	R-1B
003-0152-021-0000	521 27TH ST	95816	R-1B-SPD	R-1B
003-0102-012-0000	316 28TH ST	95816	R-1B-SPD	R-1B
003-0154-018-0000	2817 F ST 6	95816	R-1B-SPD	R-1B
003-0152-022-0000	519 27TH ST	95816	R-1B-SPD	R-1B

003-0102-015-0000	2725 D ST	95816	R-1B-SPD	R-1B
003-0151-013-0000	416 28TH ST	95816	R-1B-SPD	R-1B
003-0153-002-0000	409 28TH ST	95816	R-1B-SPD	R-1B
003-0145-012-0000	408 27TH ST	95816	R-1B-SPD	R-1B
003-0195-012-0000	614 27TH ST	95816	R-1B-SPD	R-1B
003-0203-005-0000	2810 F ST	95816	R-1B-SPD	R-1B
003-0151-003-0000	2700 D ST	95816	R-1B-SPD	R-1B
003-0145-009-0000	2624 D ST	95816	R-1B-SPD	R-1B
003-0146-009-0000	2624 E ST	95816	R-1B-SPD	R-1B
003-0102-017-0000	2717 D ST	95816	R-1B-SPD	R-1B
003-0152-020-0000	2701 F ST	95816	R-1B-SPD	R-1B
003-0201-015-0000	2731 G ST	95816	R-1B-SPD	R-1B
003-0096-019-0000	2615 D ST 6	95816	R-1B-SPD	R-1B
003-0096-006-0000	2612 C ST	95816	R-1B-SPD	R-1B
003-0201-013-0000	616 28TH ST	95816	R-1B-SPD	R-1B
003-0151-024-0000	417 27TH ST	95816	R-1B-SPD	R-1B
003-0153-004-0000	401 28TH ST	95816	R-1B-SPD	R-1B
003-0152-001-0000	515 27TH ST	95816	R-1B-SPD	R-1B
003-0104-018-0000	2817 D ST	95816	R-1B-SPD	R-1B
003-0145-003-0000	2600 D ST	95816	R-1B-SPD	R-1B
003-0145-005-0000	2610 D ST 9	95816	R-1B-SPD	R-1B
003-0145-010-0000	2630 D ST	95816	R-1B-SPD	R-1B
003-0151-002-0000	411 27TH ST	95816	R-1B-SPD	R-1B
003-0096-005-0000	2608 C ST	95816	R-1B-SPD	R-1B
003-0195-020-0000	2609 G ST	95816	R-1B-SPD	R-1B
003-0152-011-0000	510 28TH ST	95816	R-1B-SPD	R-1B
003-0152-009-0000	2726 E ST	95816	R-1B-SPD	R-1B
003-0145-001-0000	415 26TH ST	95816	R-1B-SPD	R-1B
003-0154-004-0000	2804 E ST	95816	R-1B-SPD	R-1B
003-0096-004-0000	2604 C ST	95816	R-1B-SPD	R-1B
003-0096-002-0000	309 26TH ST	95816	R-1B-SPD	R-1B
010-0046-025-0000	1921 26TH ST	95816	R-1B-SPD	R-1B
003-0145-025-0000	417 26TH ST 3	95816	R-1B-SPD	R-1B
010-0052-003-0000	2700 S ST	95816	R-1B-SPD	R-1B
003-0102-007-0000	2718 C ST	95816	R-1B-SPD	R-1B
003-0145-007-0000	2618 D ST	95816	R-1B-SPD	R-1B
003-0154-017-0000	2823 F ST	95816	R-1B-SPD	R-1B
003-0154-003-0000	2800 E ST	95816	R-1B-SPD	R-1B
003-0203-007-0000	2816 F ST	95816	R-1B-SPD	R-1B
003-0201-003-0000	2700 F ST	95816	R-1B-SPD	R-1B
003-0203-023-0000	621 28TH ST	95816	R-1B-SPD	R-1B
010-0052-005-0000	2710 S ST	95816	R-1B-SPD	R-1B
003-0146-007-0000	2618 E ST	95816	R-1B-SPD	R-1B

003-0154-021-0000	531 28TH ST	95816	R-1B-SPD	R-1B
003-0145-015-0000	422 27TH ST	95816	R-1B-SPD	R-1B
010-0116-003-0000	2600 U ST	95818	R-1B-SPD	R-1B
010-0116-002-0000	2111 26TH ST	95818	R-1B-SPD	R-1B
003-0154-002-0000	511 28TH ST B	95816	R-1B-SPD	R-1B
003-0152-004-0000	2704 E ST	95816	R-1B-SPD	R-1B
003-0146-010-0000	2630 E ST	95816	R-1B-SPD	R-1B
010-0046-017-0000	2619 T ST	95816	R-1B-SPD	R-1B
003-0154-019-0000	2815 F ST 9	95816	R-1B-SPD	R-1B
003-0154-020-0000	2811 F ST 21	95816	R-1B-SPD	R-1B
003-0195-019-0000	2613 G ST	95816	R-1B-SPD	R-1B
003-0146-004-0000	2606 E ST	95816	R-1B-SPD	R-1B
003-0152-017-0000	2715 F ST	95816	R-1B-SPD	R-1B
003-0201-006-0000	2714 F ST	95816	R-1B-SPD	R-1B
003-0096-021-0000	2605 D ST 3	95816	R-1B-SPD	R-1B
003-0152-024-0000	E ST	95816	R-1B-SPD	R-1B
003-0104-019-0000	2815 D ST	95816	R-1B-SPD	R-1B
003-0096-011-0000	310 27TH ST	95816	R-1B-SPD	R-1B
003-0096-010-0000	306 27TH ST	95816	R-1B-SPD	R-1B
003-0104-020-0000	2811 D ST	95816	R-1B-SPD	R-1B
003-0145-023-0000	2601 E ST C	95816	R-1B-SPD	R-1B
003-0146-023-0000	521 26TH ST	95816	R-1B-SPD	R-1B
003-0146-013-0000	516 27TH ST	95816	R-1B-SPD	R-1B
003-0145-013-0000	414 27TH ST	95816	R-1B-SPD	R-1B
003-0102-003-0000	307 27TH ST	95816	R-1B-SPD	R-1B
003-0151-014-0000	420 28TH ST	95816	R-1B-SPD	R-1B
003-0145-011-0000	404 27TH ST	95816	R-1B-SPD	R-1B
003-0152-016-0000	2719 F ST	95816	R-1B-SPD	R-1B
003-0195-016-0000	2627 G ST	95816	R-1B-SPD	R-1B
010-0116-021-0000	2119 26TH ST	95818	R-1B-SPD	R-1B
003-0152-015-0000	2721 F ST	95816	R-1B-SPD	R-1B
003-0201-014-0000	620 28TH ST	95816	R-1B-SPD	R-1B
010-0116-018-0000	2611 V ST	95818	R-1B-SPD	R-1B
003-0151-011-0000	410 28TH ST	95816	R-1B-SPD	R-1B
003-0151-015-0000	2731 E ST	95816	R-1B-SPD	R-1B
003-0145-022-0000	2607 E ST 3	95816	R-1B-SPD	R-1B
003-0201-007-0000	2716 F ST	95816	R-1B-SPD	R-1B
010-0115-003-0000	2005 26TH ST	95818	R-1B-SPD	R-1B
003-0153-020-0000	2801 E ST	95816	R-1B-SPD	R-1B
003-0146-011-0000	512 27TH ST	95816	R-1B-SPD	R-1B
010-0046-024-0000	1917 26TH ST	95816	R-1B-SPD	R-1B
003-0104-001-0000	315 28TH ST	95816	R-1B-SPD	R-1B
003-0104-002-0000	311 28TH ST	95816	R-1B-SPD	R-1B

010-0052-001-0000	1915 27TH ST	95816	R-1B-SPD	R-1B
003-0145-017-0000	2627 E ST	95816	R-1B-SPD	R-1B
003-0095-020-0000	2621 C ST 8	95816	R-1B-SPD	R-1B
003-0095-025-0000	229 26TH ST	95816	R-1B-SPD	R-1B
003-0195-003-0000	2600 F ST	95816	R-1B-SPD	R-1B
003-0201-022-0000	2701 G ST	95816	R-1B-SPD	R-1B
010-0116-004-0000	2606 U ST	95818	R-1B-SPD	R-1B
010-0046-014-0000	1920 27TH ST	95816	R-1B-SPD	R-1B
003-0195-023-0000	621 26TH ST	95816	R-1B-SPD	R-1B
003-0145-004-0000	2604 D ST	95816	R-1B-SPD	R-1B
003-0201-010-0000	2730 F ST	95816	R-1B-SPD	R-1B
003-0154-022-0000	527 28TH ST	95816	R-1B-SPD	R-1B
003-0152-025-0000	EGGPLANT ALY	95816	R-1B-SPD	R-1B
003-0203-022-0000	2801 G ST	95816	R-1B-SPD	R-1B
003-0102-020-0000	2707 D ST	95816	R-1B-SPD	R-1B
010-0046-020-0000	2609 T ST	95816	R-1B-SPD	R-1B
010-0046-011-0000	1908 27TH ST	95816	R-1B-SPD	R-1B
003-0151-001-0000	415 27TH ST	95816	R-1B-SPD	R-1B
010-0052-004-0000	2704 S ST	95816	R-1B-SPD	R-1B
003-0152-019-0000	2705 F ST	95816	R-1B-SPD	R-1B
003-0096-001-0000	313 26TH ST	95816	R-1B-SPD	R-1B
010-0115-004-0000	2003 26TH ST	95818	R-1B-SPD	R-1B
003-0095-024-0000	2605 C ST	95816	R-1B-SPD	R-1B
003-0151-009-0000	2724 D ST	95816	R-1B-SPD	R-1B
003-0096-014-0000	318 27TH ST	95816	R-1B-SPD	R-1B
010-0115-002-0000	2009 26TH ST	95818	R-1B-SPD	R-1B
010-0046-012-0000	1914 27TH ST	95816	R-1B-SPD	R-1B
003-0104-021-0000	2805 D ST	95816	R-1B-SPD	R-1B
003-0096-003-0000	2600 C ST	95816	R-1B-SPD	R-1B
003-0151-008-0000	2720 D ST	95816	R-1B-SPD	R-1B
003-0201-008-0000	2720 F ST	95816	R-1B-SPD	R-1B
003-0154-005-0000	2810 E ST	95816	R-1B-SPD	R-1B
007-0271-029-0000	2712 N ST	95816	R-3A-SPD	R-3A
007-0335-013-0000	1618 27TH ST	95816	R-3A-SPD	R-3A
007-0335-015-0000	2623 Q ST	95816	R-3A-SPD	R-3A
007-0335-012-0000	1614 27TH ST	95816	R-3A-SPD	R-3A
007-0044-002-0000	911 28TH ST	95816	R-3A-SPD	R-3A
003-0196-013-0000	720 27TH ST	95816	R-3A-SPD	R-3A
007-0041-013-0000	816 28TH ST	95816	R-3A-SPD	R-3A
007-0271-022-0000	1417 27TH ST	95816	R-3A-SPD	R-3A
010-0127-020-0000	2705 U ST	95818	R-3A-SPD	R-3A
010-0115-007-0000	2616 T ST	95816	R-3A-SPD	R-3A
003-0196-014-0000	2631 H ST	95816	R-3A-SPD	R-3A

007-0044-005-0000	2810 I ST	95816	R-3A-SPD	R-3A
010-0116-013-0000	2120 27TH ST	95818	R-3A-SPD	R-3A
007-0265-019-0000	1425 26TH ST	95816	R-3A-SPD	R-3A
007-0265-020-0000	1431 26TH ST	95816	R-3A-SPD	R-3A
003-0202-007-0000	2721 H ST	95816	R-3A-SPD	R-3A
007-0272-018-0000	2717 P ST	95816	R-3A-SPD	R-3A
010-0122-022-0000	2705 V ST	95818	R-3A-SPD	R-3A
007-0265-015-0000	2609 O ST	95816	R-3A-SPD	R-3A
003-0204-025-0000	2805 H ST	95816	R-3A-SPD	R-3A
007-0272-002-0000	1509 27TH ST	95816	R-3A-SPD	R-3A
010-0116-007-0000	2618 U ST	95818	R-3A-SPD	R-3A
007-0272-001-0000	1515 27TH ST	95816	R-3A-SPD	R-3A
007-0041-006-0000	2714 H ST	95816	R-3A-SPD	R-3A
003-0204-024-0000	2809 H ST	95816	R-3A-SPD	R-3A
007-0271-027-0000	2715 O ST	95816	R-3A-SPD	R-3A
010-0115-005-0000	2608 T ST	95816	R-3A-SPD	R-3A
007-0272-005-0000	2710 O ST	95816	R-3A-SPD	R-3A
003-0202-003-0000	720 28TH ST	95816	R-3A-SPD	R-3A
007-0043-016-0000	2827 I ST	95816	R-3A-SPD	R-3A
007-0265-011-0000	1416 27TH ST	95816	R-3A-SPD	R-3A
003-0204-004-0000	2806 G ST	95816	R-3A-SPD	R-3A
010-0127-017-0000	2719 U ST	95818	R-3A-SPD	R-3A
010-0127-018-0000	2715 U ST	95818	R-3A-SPD	R-3A
010-0115-029-0000	2010 27TH ST	95818	R-3A-SPD	R-3A
010-0115-012-0000	2014 27TH ST	95818	R-3A-SPD	R-3A
007-0272-017-0000	2727 P ST	95816	R-3A-SPD	R-3A
007-0341-001-0000	1616 28TH ST	95816	R-3A-SPD	R-3A
007-0265-003-0000	2604 N ST	95816	R-3A-SPD	R-3A
007-0043-002-0000	811 28TH ST	95816	R-3A-SPD	R-3A
007-0266-018-0000	2601 P ST	95816	R-3A-SPD	R-3A
007-0266-013-0000	2625 P ST	95816	R-3A-SPD	R-3A
007-0335-009-0000	2626 P ST	95816	R-3A-SPD	R-3A
007-0272-013-0000	1516 28TH ST	95816	R-3A-SPD	R-3A
010-0127-006-0000	2712 T ST	95816	R-3A-SPD	R-3A
007-0036-003-0000	901 26TH ST	95816	R-3A-SPD	R-3A
003-0196-021-0000	2601 H ST	95816	R-3A-SPD	R-3A
010-0127-004-0000	2704 T ST	95816	R-3A-SPD	R-3A
010-0122-025-0000	2117 27TH ST	95818	R-3A-SPD	R-3A
003-0202-008-0000	2715 H ST	95816	R-3A-SPD	R-3A
007-0041-019-0000	2719 I ST	95816	R-3A-SPD	R-3A
010-0127-001-0000	2015 27TH ST	95818	R-3A-SPD	R-3A
003-0196-020-0000	2611 H ST	95816	R-3A-SPD	R-3A
007-0041-020-0000	2711 I ST	95816	R-3A-SPD	R-3A

007-0266-002-0000	1511 26TH ST	95816	R-3A-SPD	R-3A
007-0272-010-0000	1504 28TH ST	95816	R-3A-SPD	R-3A
007-0272-009-0000	2728 O ST	95816	R-3A-SPD	R-3A
003-0196-006-0000	2616 G ST	95816	R-3A-SPD	R-3A
003-0196-005-0000	2612 G ST	95816	R-3A-SPD	R-3A
010-0122-003-0000	2700 U ST	95818	R-3A-SPD	R-3A
010-0127-019-0000	2711 U ST	95818	R-3A-SPD	R-3A
007-0041-001-0000	815 27TH ST	95816	R-3A-SPD	R-3A
007-0335-016-0000	2619 Q ST	95816	R-3A-SPD	R-3A
003-0204-007-0000	2816 G ST	95816	R-3A-SPD	R-3A
010-0122-008-0000	2718 U ST	95818	R-3A-SPD	R-3A
010-0052-017-0000	2727 T ST	95816	R-3A-SPD	R-3A
007-0335-007-0000	2616 P ST	95816	R-3A-SPD	R-3A
007-0041-017-0000	2725 I ST	95816	R-3A-SPD	R-3A
010-0122-023-0000	2701 V ST	95818	R-3A-SPD	R-3A
010-0052-026-0000	2722 S ST	95816	R-3A-SPD	R-3A
007-0335-017-0000	2615 Q ST	95816	R-3A-SPD	R-3A
010-0052-018-0000	2721 T ST	95816	R-3A-SPD	R-3A
010-0052-019-0000	2713 T ST	95816	R-3A-SPD	R-3A
007-0335-020-0000	1625 26TH ST	95816	R-3A-SPD	R-3A
007-0036-019-0000	912 27TH ST	95816	R-3A-SPD	R-3A
007-0335-010-0000	2630 P ST	95816	R-3A-SPD	R-3A
007-0041-008-0000	2724 H ST	95816	R-3A-SPD	R-3A
007-0043-025-0000	2810 H ST	95816	R-3A-SPD	R-3A
007-0043-003-0000	2800 H ST	95816	R-3A-SPD	R-3A
007-0271-024-0000	2701 O ST	95816	R-3A-SPD	R-3A
007-0271-003-0000	2706 N ST	95816	R-3A-SPD	R-3A
010-0122-010-0000	2726 U ST	95818	R-3A-SPD	R-3A
007-0335-005-0000	2608 P ST	95816	R-3A-SPD	R-3A
007-0265-016-0000	1421 26TH ST	95816	R-3A-SPD	R-3A
007-0265-018-0000	1419 26TH ST	95816	R-3A-SPD	R-3A
003-0204-001-0000	715 28TH ST	95816	R-3A-SPD	R-3A
003-0204-005-0000	2808 G ST	95816	R-3A-SPD	R-3A
010-0116-008-0000	2620 U ST	95818	R-3A-SPD	R-3A
003-0196-015-0000	2627 H ST	95816	R-3A-SPD	R-3A
007-0271-018-0000	2717 O ST	95816	R-3A-SPD	R-3A
007-0165-011-0000	2627 CAPITOL AVE 8	95816	R-3A-SPD	R-3A
010-0115-013-0000	2016 27TH ST	95818	R-3A-SPD	R-3A
010-0122-009-0000	2722 U ST	95818	R-3A-SPD	R-3A
010-0122-026-0000	2710 U ST	95818	R-3A-SPD	R-3A
007-0272-019-0000	2711 P ST	95816	R-3A-SPD	R-3A
010-0115-023-0000	2017 26TH ST	95818	R-3A-SPD	R-3A
003-0196-025-0000	2600 G ST	95816	R-3A-SPD	R-3A

007-0043-019-0000	2815 I ST	95816	R-3A-SPD	R-3A
003-0196-026-0000	703 26TH ST	95816	R-3A-SPD	R-3A
007-0041-021-0000	2707 I ST	95816	R-3A-SPD	R-3A
007-0043-022-0000	2801 I ST	95816	R-3A-SPD	R-3A
007-0043-024-0000	817 28TH ST	95816	R-3A-SPD	R-3A
007-0266-005-0000	2608 O ST	95816	R-3A-SPD	R-3A
003-0196-008-0000	2628 G ST	95816	R-3A-SPD	R-3A
007-0043-023-0000	823 28TH ST	95816	R-3A-SPD	R-3A
007-0272-021-0000	2701 P ST	95816	R-3A-SPD	R-3A
007-0036-006-0000	2614 I ST uppr	95816	R-3A-SPD	R-3A
007-0036-004-0000	2608 I ST	95816	R-3A-SPD	R-3A
003-0204-003-0000	2800 G ST	95816	R-3A-SPD	R-3A
007-0271-021-0000	1421 27TH ST	95816	R-3A-SPD	R-3A
007-0043-021-0000	2805 I ST	95816	R-3A-SPD	R-3A
003-0196-001-0000	711 26TH ST	95816	R-3A-SPD	R-3A
003-0204-006-0000	2814 G ST	95816	R-3A-SPD	R-3A
010-0122-002-0000	2107 27TH ST	95818	R-3A-SPD	R-3A
007-0266-003-0000	1501 26TH ST	95816	R-3A-SPD	R-3A
007-0265-010-0000	1412 27TH ST	95816	R-3A-SPD	R-3A
007-0043-006-0000	2814 H ST	95816	R-3A-SPD	R-3A
010-0052-022-0000	2701 T ST	95816	R-3A-SPD	R-3A
010-0122-020-0000	2715 V ST	95818	R-3A-SPD	R-3A
007-0044-006-0000	2814 I ST	95816	R-3A-SPD	R-3A
003-0196-009-0000	2630 G ST	95816	R-3A-SPD	R-3A
007-0272-004-0000	2706 O ST	95816	R-3A-SPD	R-3A
010-0116-023-0000	2610 U ST	95818	R-3A-SPD	R-3A
007-0041-009-0000	2726 H ST	95816	R-3A-SPD	R-3A
003-0204-022-0000	723 28TH ST	95816	R-3A-SPD	R-3A
010-0115-028-0000	2630 T ST	95817	R-3A-SPD	R-3A
007-0036-018-0000	2630 I ST	95816	R-3A-SPD	R-3A
007-0043-001-0000	815 28TH ST	95816	R-3A-SPD	R-3A
007-0165-006-0000	2630 L ST	95816	R-3A-SPD	R-3A
003-0196-018-0000	2617 H ST	95816	R-3A-SPD	R-3A
003-0196-017-0000	H ST	95816	R-3A-SPD	R-3A
007-0265-006-0000	2618 N ST	95816	R-3A-SPD	R-3A
007-0265-007-0000	2620 N ST	95816	R-3A-SPD	R-3A
007-0265-008-0000	2626 N ST	95816	R-3A-SPD	R-3A
007-0043-007-0000	2818 H ST	95816	R-3A-SPD	R-3A
010-0052-020-0000	2709 T ST	95816	R-3A-SPD	R-3A
007-0272-015-0000	2731 P ST	95816	R-3A-SPD	R-3A
007-0335-008-0000	2620 P ST	95816	R-3A-SPD	R-3A
007-0041-023-0000	817 27TH ST	95816	R-3A-SPD	R-3A
007-0266-020-0000	1517 26TH ST	95816	R-3A-SPD	R-3A

007-0272-028-0000	2722 O ST	95816	R-3A-SPD	R-3A
010-0122-018-0000	2727 V ST	95818	R-3A-SPD	R-3A
007-0043-020-0000	2811 I ST	95816	R-3A-SPD	R-3A
007-0165-010-0000	2631 CAPITOL AVE	95816	R-3A-SPD	R-3A
007-0265-002-0000	2600 N ST	95816	R-3A-SPD	R-3A
007-0036-017-0000	2620 I ST	95816	R-3A-SPD	R-3A
003-0102-019-0000	2709 D ST 9	95816	R-3A-SPD	R-3A
007-0165-007-0000	1214 27TH ST	95816	R-3A-SPD	R-3A
010-0116-012-0000	2116 27TH ST	95818	R-3A-SPD	R-3A
010-0127-023-0000	2017 27TH ST	95818	R-3A-SPD	R-3A
007-0041-022-0000	2701 I ST	95816	R-3A-SPD	R-3A
007-0335-021-0000	1619 26TH ST	95816	R-3A-SPD	R-3A
010-0116-009-0000	2622 U ST	95818	R-3A-SPD	R-3A
007-0335-002-0000	1611 26TH ST	95816	R-3A-SPD	R-3A
007-0272-023-0000	1517 27TH ST	95816	R-3A-SPD	R-3A
007-0166-007-0000	2631 N ST	95816	R-3A-SPD	R-3A
003-0153-025-0000	2811 E ST	95816	R-3A-SPD	R-3A
007-0335-019-0000	1631 26TH ST	95816	R-3A-SPD	R-3A
007-0043-008-0000	2822 H ST	95816	R-3A-SPD	R-3A
003-0202-006-0000	2723 H ST	95816	R-3A-SPD	R-3A
010-0116-015-0000	2625 V ST	95818	R-3A-SPD	R-3A
007-0335-004-0000	2604 P ST	95816	R-3A-SPD	R-3A
007-0041-012-0000	814 28TH ST	95816	R-3A-SPD	R-3A
003-0196-023-0000	719 26TH ST	95816	R-3A-SPD	R-3A
007-0271-023-0000	2716 N ST	95816	R-3A-SPD	R-3A
007-0041-014-0000	820 28TH ST	95816	R-3A-SPD	R-3A
007-0044-008-0000	2822 I ST	95816	R-3A-SPD	R-3A
003-0196-016-0000	2623 H ST	95816	R-3A-SPD	R-3A
010-0122-024-0000	2121 27TH ST	95818	R-3A-SPD	R-3A
010-0116-011-0000	2108 27TH ST	95818	R-3A-SPD	R-3A
007-0272-014-0000	1520 28TH ST	95816	R-3A-SPD	R-3A
007-0266-012-0000	1528 27TH ST	95816	R-3A-SPD	R-3A
010-0122-004-0000	2706 U ST	95818	R-3A-SPD	R-3A
007-0272-003-0000	2700 O ST	95816	R-3A-SPD	R-3A
007-0041-002-0000	811 27TH ST	95816	R-3A-SPD	R-3A
007-0044-009-0000	2826 I ST	95816	R-3A-SPD	R-3A
007-0271-002-0000	2700 N ST	95816	R-3A-SPD	R-3A
010-0127-022-0000	2023 27TH ST	95818	R-3A-SPD	R-3A
007-0335-003-0000	2600 P ST	95816	R-3A-SPD	R-3A
007-0041-010-0000	808 28TH ST	95816	R-3A-SPD	R-3A
007-0271-017-0000	2721 O ST	95816	R-3A-SPD	R-3A
010-0127-002-0000	2009 27TH ST	95818	R-3A-SPD	R-3A
007-0272-020-0000	2705 P ST	95816	R-3A-SPD	R-3A

010-0115-026-0000	2623 U ST	95818	R-3A-SPD	R-3A
007-0266-017-0000	2607 P ST	95816	R-3A-SPD	R-3A
007-0335-022-0000	1617 26TH ST	95816	R-3A-SPD	R-3A
007-0272-027-0000	2712 O ST	95816	R-3A-SPD	R-3A
007-0265-014-0000	2615 O ST	95816	R-3A-SPD	R-3A
007-0041-018-0000	2721 I ST	95816	R-3A-SPD	R-3A
010-0115-015-0000	2629 U ST	95818	R-3A-SPD	R-3A
007-0043-018-0000	2817 I ST	95816	R-3A-SPD	R-3A
003-0202-012-0000	719 27TH ST	95816	R-3A-SPD	R-3A
007-0265-005-0000	2616 N ST	95816	R-3A-SPD	R-3A
007-0041-005-0000	2710 H ST	95816	R-3A-SPD	R-3A
010-0116-016-0000	2623 V ST	95818	R-3A-SPD	R-3A
007-0266-006-0000	2610 O ST	95816	R-3A-SPD	R-3A
003-0202-004-0000	2731 H ST	95816	R-3A-SPD	R-3A
003-0153-016-0000	2819 E ST 8	95816	R-3A-SPD	R-3A
010-0127-003-0000	2700 T ST	95816	R-3A-SPD	R-3A
003-0202-010-0000	2705 H ST	95816	R-3A-SPD	R-3A
003-0153-008-0000	D ST	95816	R-3A-SPD	R-3A
003-0153-007-0000	2816 D ST B	95816	R-3A-SPD	R-3A
010-0122-001-0000	2115 27TH ST	95818	R-3A-SPD	R-3A
007-0041-003-0000	2700 H ST	95816	R-3A-SPD	R-3A
007-0265-013-0000	2619 O ST	95816	R-3A-SPD	R-3A
003-0196-010-0000	708 27TH ST	95816	R-3A-SPD	R-3A
007-0041-007-0000	2720 H ST	95816	R-3A-SPD	R-3A
010-0122-019-0000	2717 V ST	95818	R-3A-SPD	R-3A
007-0265-004-0000	2610 N ST	95816	R-3A-SPD	R-3A
007-0041-016-0000	2727 I ST	95816	R-3A-SPD	R-3A
003-0204-021-0000	2801 H ST	95816	R-3A-SPD	R-3A
007-0335-014-0000	1626 27TH ST	95816	R-3A-SPD	R-3A
007-0165-009-0000	1220 27TH ST	95816	R-3A-SPD	R-3A
007-0266-011-0000	1520 27TH ST	95816	R-3A-SPD	R-3A
010-0052-021-0000	2707 T ST	95816	R-3A-SPD	R-3A
010-0115-009-0000	2626 T ST	95816	R-3A-SPD	R-3A
003-0202-009-0000	2709 H ST	95816	R-3A-SPD	R-3A
010-0052-025-0000	2718 S ST	95816	R-3A-SPD	R-3A
007-0266-001-0000	1515 26TH ST	95816	R-3A-SPD	R-3A
007-0335-018-0000	2609 Q ST	95816	R-3A-SPD	R-3A
003-0202-001-0000	2718 G ST	95816	R-3A-SPD	R-3A
010-0127-021-0000	2031 27TH ST	95818	R-3A-SPD	R-3A
010-0127-007-0000	2714 T ST	95816	R-3A-SPD	R-3A
007-0041-015-0000	2729 I ST	95816	R-3A-SPD	R-3A
003-0196-007-0000	2620 G ST	95816	R-3A-SPD	R-3A
003-0202-002-0000	716 28TH ST	95816	R-3A-SPD	R-3A

010-0122-021-0000	2711 V ST	95818	R-3A-SPD	R-3A
010-0052-008-0000	2716 S ST	95816	R-3A-SPD	R-3A
003-0204-002-0000	711 28TH ST	95816	R-3A-SPD	R-3A
010-0115-008-0000	2620 T ST	95816	R-3A-SPD	R-3A
003-0153-006-0000	2814 D ST 25	95816	R-3A-SPD	R-3A
003-0153-005-0000	2812 D ST 7	95816	R-3A-SPD	R-3A
007-0266-004-0000	2604 O ST	95816	R-3A-SPD	R-3A
010-0115-019-0000	2611 U ST	95818	R-3A-SPD	R-3A
007-0044-007-0000	2818 I ST	95816	R-3A-SPD	R-3A
007-0265-001-0000	1415 26TH ST	95816	R-3A-SPD	R-3A
007-0266-014-0000	2621 P ST	95816	R-3A-SPD	R-3A
007-0271-026-0000	2707 O ST	95816	R-3A-SPD	R-3A
003-0202-005-0000	2727 H ST	95816	R-3A-SPD	R-3A
003-0196-024-0000	2606 G ST	95816	R-3A-SPD	R-3A
007-0266-010-0000	1516 27TH ST	95816	R-3A-SPD	R-3A
007-0266-016-0000	2609 P ST	95816	R-3A-SPD	R-3A
007-0041-004-0000	2706 H ST	95816	R-3A-SPD	R-3A
010-0115-018-0000	2615 U ST	95818	R-3A-SPD	R-3A
010-0115-006-0000	2614 T ST	95816	R-3A-SPD	R-3A
007-0165-008-0000	1216 27TH ST	95816	R-3A-SPD	R-3A
010-0127-005-0000	2708 T ST	95816	R-3A-SPD	R-3A
007-0166-004-0000	1318 27TH ST	95816	R-3A-SPD	R-3A
007-0166-005-0000	1322 27TH ST	95816	R-3A-SPD	R-3A
007-0166-006-0000	1324 27TH ST	95816	R-3A-SPD	R-3A
007-0266-021-0000	2630 O ST	95816	R-3A-SPD	R-3A
007-0044-003-0000	903 28TH ST	95816	R-3A-SPD	R-3A
010-0116-014-0000	2126 27TH ST	95818	R-3A-SPD	R-3A
010-0115-014-0000	2018 27TH ST	95818	R-3A-SPD	R-3A
007-0036-001-0000	915 26TH ST	95816	R-3A-SPD	R-3A
007-0036-005-0000	911 1/2 26TH ST	95816	R-3A-SPD	R-3A
007-0036-002-0000	911 26TH ST	95816	R-3A-SPD	R-3A
010-0127-008-0000	2718 T ST	95816	R-3A-SPD	R-3A
007-0335-006-0000	2612 P ST	95816	R-3A-SPD	R-3A
007-0041-011-0000	812 28TH ST	95816	R-3A-SPD	R-3A
003-0196-022-0000	723 26TH ST	95816	R-3A-SPD	R-3A
007-0265-012-0000	1430 27TH ST	95816	R-3A-SPD	R-3A
007-0272-016-0000	2729 P ST	95816	R-3A-SPD	R-3A
007-0335-011-0000	1608 27TH ST	95816	R-3A-SPD	R-3A
007-0044-004-0000	901 28TH ST	95816	R-3A-SPD	R-3A
007-0335-001-0000	1615 26TH ST	95816	R-3A-SPD	R-3A
007-0044-001-0000	915 28TH ST	95816	R-3A-SPD	R-3A
010-0115-020-0000	2605 U ST	95818	R-3A-SPD	R-3A
007-0266-019-0000	1523 26TH ST	95816	R-3A-SPD	R-3A

003-0196-012-0000	716 27TH ST	95816	R-3A-SPD	R-3A
003-0196-011-0000	714 27TH ST	95816	R-3A-SPD	R-3A
003-0196-019-0000	2615 H ST	95816	R-3A-SPD	R-3A
007-0043-017-0000	2821 1/2 I ST	95816	R-3A-SPD	R-3A
003-0196-004-0000	2610 G ST	95816	R-3A-SPD	R-3A
007-0166-013-0000	2601 N ST	95816	R-3A-SPD	R-3A
010-0116-017-0000	2615 V ST	95818	R-3A-SPD	R-3A
007-0266-015-0000	2615 P ST	95816	R-3A-SPD	R-3A
007-0265-009-0000	1400 27TH ST	95816	R-3A-SPD	R-3A
003-0202-011-0000	2701 H ST	95816	R-3A-SPD	R-3A
007-0380-003-0000	810 27TH ST	95816	R-4-PUD-SPD	R-4-PUD
007-0380-028-0000	21 METRO LN	95816	R-4-PUD-SPD	R-4-PUD
007-0380-006-0000	834 27TH ST	95816	R-4-PUD-SPD	R-4-PUD
007-0380-007-0000	828 27TH ST	95816	R-4-PUD-SPD	R-4-PUD
007-0380-031-0000	39 METRO LN	95816	R-4-PUD-SPD	R-4-PUD
007-0380-024-0000	2612 H ST	95816	R-4-PUD-SPD	R-4-PUD
007-0380-037-0000	2609 I ST	95816	R-4-PUD-SPD	R-4-PUD
007-0380-041-0000	841 26TH ST	95816	R-4-PUD-SPD	R-4-PUD
007-0380-036-0000	2619 I ST	95816	R-4-PUD-SPD	R-4-PUD
007-0380-002-0000	2630 H ST	95816	R-4-PUD-SPD	R-4-PUD
007-0380-001-0000	2624 H ST	95816	R-4-PUD-SPD	R-4-PUD
007-0380-021-0000	8 METRO LN	95816	R-4-PUD-SPD	R-4-PUD
007-0380-025-0000	1 METRO LN	95816	R-4-PUD-SPD	R-4-PUD
007-0380-009-0000	846 27TH ST	95816	R-4-PUD-SPD	R-4-PUD
007-0380-018-0000	26 METRO LN	95816	R-4-PUD-SPD	R-4-PUD
007-0035-003-0000	2600 H ST	95816	R-4-PUD-SPD	R-4-PUD
007-0380-016-0000	38 METRO LN	95816	R-4-PUD-SPD	R-4-PUD
007-0380-026-0000	7 METRO LN	95816	R-4-PUD-SPD	R-4-PUD
007-0380-013-0000	56 METRO LN	95816	R-4-PUD-SPD	R-4-PUD
007-0380-038-0000	2605 I ST	95816	R-4-PUD-SPD	R-4-PUD
007-0380-039-0000	2601 I ST	95816	R-4-PUD-SPD	R-4-PUD
007-0380-011-0000	2627 I ST	95816	R-4-PUD-SPD	R-4-PUD
007-0380-023-0000	2618 H ST	95816	R-4-PUD-SPD	R-4-PUD
007-0380-019-0000	20 METRO LN	95816	R-4-PUD-SPD	R-4-PUD
007-0380-043-0000	829 26TH ST	95816	R-4-PUD-SPD	R-4-PUD
007-0380-040-0000	847 26TH ST	95816	R-4-PUD-SPD	R-4-PUD
007-0380-029-0000	27 METRO LN	95816	R-4-PUD-SPD	R-4-PUD
007-0380-032-0000	45 METRO LN	95816	R-4-PUD-SPD	R-4-PUD
007-0380-033-0000	51 METRO LN	95816	R-4-PUD-SPD	R-4-PUD
007-0380-046-0000	2620 H ST	95816	R-4-PUD-SPD	R-4-PUD
007-0380-030-0000	33 METRO LN	95816	R-4-PUD-SPD	R-4-PUD
007-0380-008-0000	840 27TH ST	95816	R-4-PUD-SPD	R-4-PUD
007-0035-004-0000	2604 H ST	95816	R-4-PUD-SPD	R-4-PUD

007-0380-004-0000	816 27TH ST	95816	R-4-PUD-SPD	R-4-PUD
007-0380-042-0000	835 26TH ST	95816	R-4-PUD-SPD	R-4-PUD
007-0380-035-0000	2615 I ST	95816	R-4-PUD-SPD	R-4-PUD
007-0380-010-0000	2631 I ST	95816	R-4-PUD-SPD	R-4-PUD
007-0380-022-0000	2 METRO LN	95816	R-4-PUD-SPD	R-4-PUD
007-0380-012-0000	2623 I ST	95816	R-4-PUD-SPD	R-4-PUD
007-0380-020-0000	14 METRO LN	95816	R-4-PUD-SPD	R-4-PUD
007-0380-045-0000	817 26TH ST	95816	R-4-PUD-SPD	R-4-PUD
007-0380-027-0000	15 METRO LN	95816	R-4-PUD-SPD	R-4-PUD
007-0380-015-0000	44 METRO LN	95816	R-4-PUD-SPD	R-4-PUD
007-0380-005-0000	822 27TH ST	95816	R-4-PUD-SPD	R-4-PUD
007-0380-017-0000	32 METRO LN	95816	R-4-PUD-SPD	R-4-PUD
007-0035-002-0000	811 26TH ST	95816	R-4-PUD-SPD	R-4-PUD
007-0380-044-0000	823 26TH ST	95816	R-4-PUD-SPD	R-4-PUD
007-0380-014-0000	50 METRO LN	95816	R-4-PUD-SPD	R-4-PUD
007-0380-034-0000	57 METRO LN	95816	R-4-PUD-SPD	R-4-PUD
007-0410-001-0000	1320 W SUTTER WALK	95816	R-4-SPD	R-4
007-0410-024-0000	1329 EAST SUTTER WALK	95816	R-4-SPD	R-4
007-0410-003-0000	1324 W SUTTER WALK	95816	R-4-SPD	R-4
007-0410-027-0000	1323 EAST SUTTER WALK	95816	R-4-SPD	R-4
007-0410-022-0000	2623 N ST	95816	R-4-SPD	R-4
007-0410-005-0000	1328 W SUTTER WALK	95816	R-4-SPD	R-4
003-0154-007-0000	2818 E ST 2	95816	R-4-SPD	R-4
007-0410-018-0000	1326 EAST SUTTER WALK	95816	R-4-SPD	R-4
010-0116-024-0000	2100 27TH ST	95818	R-4-SPD	R-4
007-0410-006-0000	2605 N ST	95816	R-4-SPD	R-4
007-0410-014-0000	1321 W SUTTER WALK	95816	R-4-SPD	R-4
007-0410-026-0000	1325 EAST SUTTER WALK	95816	R-4-SPD	R-4
007-0410-009-0000	2613 N ST	95816	R-4-SPD	R-4
007-0410-017-0000	1324 EAST SUTTER WALK	95816	R-4-SPD	R-4
007-0410-015-0000	1320 EAST SUTTER WALK	95816	R-4-SPD	R-4
007-0410-002-0000	1322 W SUTTER WALK	95816	R-4-SPD	R-4
010-0116-025-0000	2102 27TH ST	95818	R-4-SPD	R-4
007-0410-023-0000	2625 N ST	95816	R-4-SPD	R-4
007-0410-004-0000	1326 W SUTTER WALK	95816	R-4-SPD	R-4
007-0410-019-0000	1328 EAST SUTTER WALK	95816	R-4-SPD	R-4
007-0410-021-0000	2621 N ST	95816	R-4-SPD	R-4
007-0410-012-0000	1325 W SUTTER WALK	95816	R-4-SPD	R-4
007-0410-028-0000	1321 EAST SUTTER WALK	95816	R-4-SPD	R-4
007-0410-020-0000	2617 N ST	95816	R-4-SPD	R-4
007-0410-013-0000	1323 W SUTTER WALK	95816	R-4-SPD	R-4
007-0410-010-0000	1329 W SUTTER WALK	95816	R-4-SPD	R-4
007-0410-025-0000	1327 EAST SUTTER WALK	95816	R-4-SPD	R-4

007-0410-008-0000	2611 N ST	95816	R-4-SPD	R-4
007-0410-007-0000	2607 N ST	95816	R-4-SPD	R-4
007-0410-016-0000	1322 EAST SUTTER WALK	95816	R-4-SPD	R-4
007-0410-011-0000	1327 W SUTTER WALK	95816	R-4-SPD	R-4
007-0410-029-0000	2606 TRINITY CATHEDRAL LN	95816	R-4-SPD	R-4
007-0410-030-0000	2620 TRINITY CATHEDRAL LN	95816	R-4-SPD	R-4
010-0187-003-0000	2700 V ST	95818	R-5-SPD	R-5
010-0187-005-0000	2710 V ST	95818	R-5-SPD	R-5
010-0187-002-0000	2205 27TH ST	95818	R-5-SPD	R-5
010-0187-007-0000	2217 27TH ST	95818	R-5-SPD	R-5
010-0187-001-0000	2215 27TH ST	95818	R-5-SPD	R-5
010-0187-004-0000	2706 V ST	95818	R-5-SPD	R-5
003-0103-001-0000	2814 B ST	95816	RMX-SPD	RMX
007-0165-018-0000	2600 L ST	95816	RO-SPD	RO
007-0165-019-0000	1217 26TH ST	95816	RO-SPD	RO
007-0165-020-0000	2609 CAPITOL AVE	95816	RO-SPD	RO
007-0165-012-0000	2621 CAPITOL AVE	95816	RO-SPD	RO
007-0165-013-0000	2615 CAPITOL AVE	95816	RO-SPD	RO
007-0165-005-0000	2625 LIESTAL ALY	95816	RO-SPD	RO
007-0165-015-0000	2601 CAPITOL AVE	95816	RO-SPD	RO
007-0166-014-0000	2620 CAPITOL AVE	95816	RO-SPD	RO
010-0176-026-0000	2600 V ST	95818	RO-SPD	RO